

Suspension

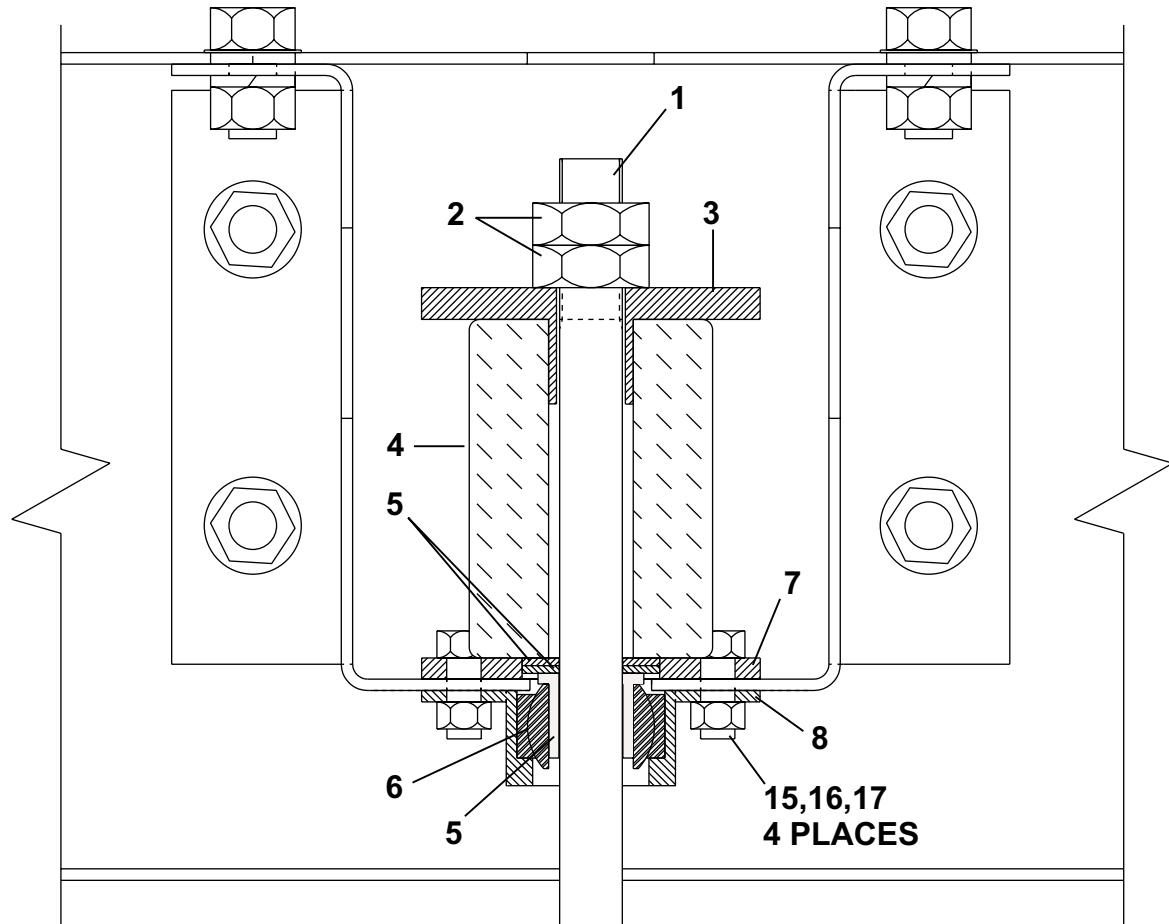
3626X8J,X8W 4226X7J,X7W 4232X7J,X7W

BMP040002/2004333V
(Sheet 1 of 3)



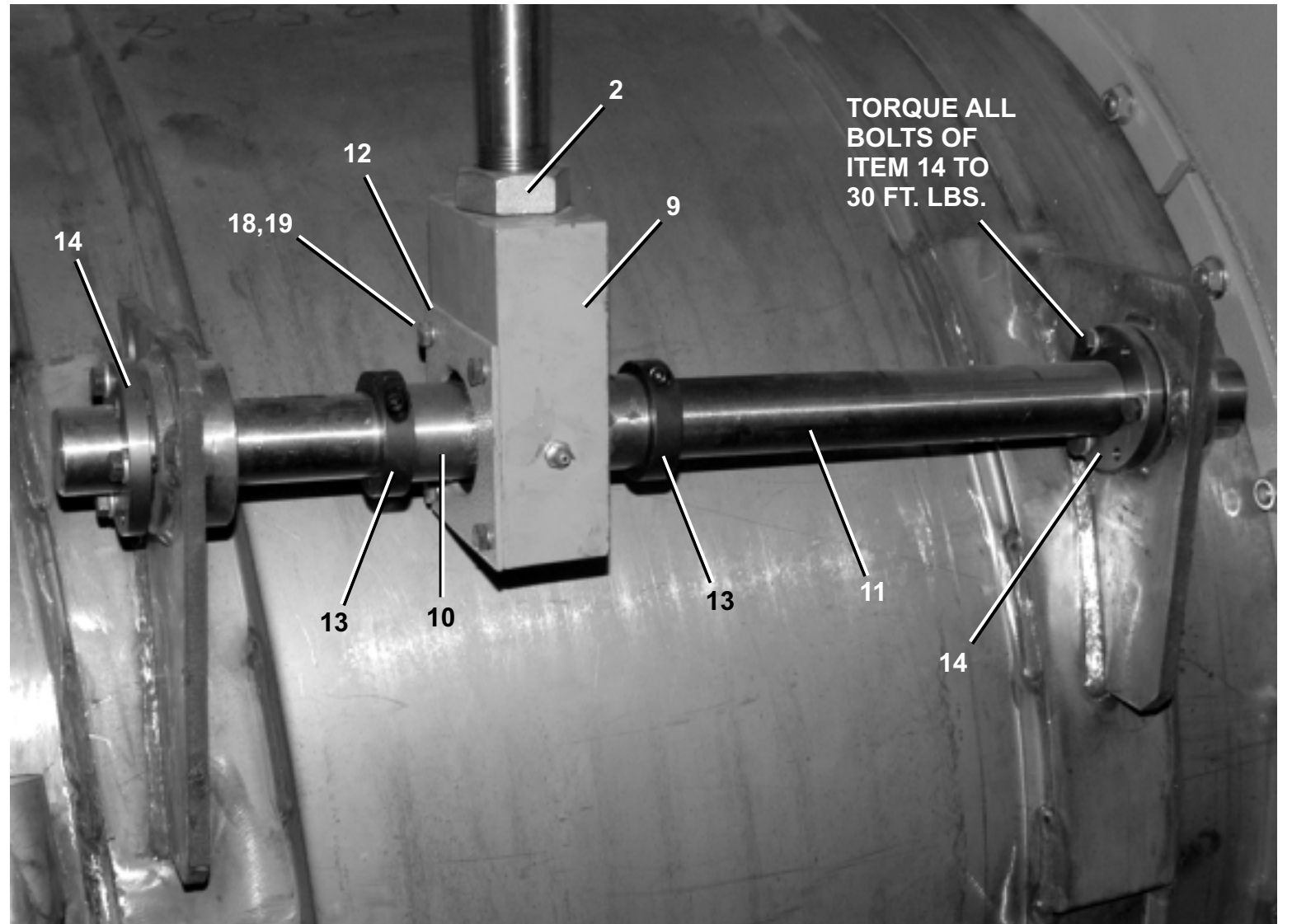
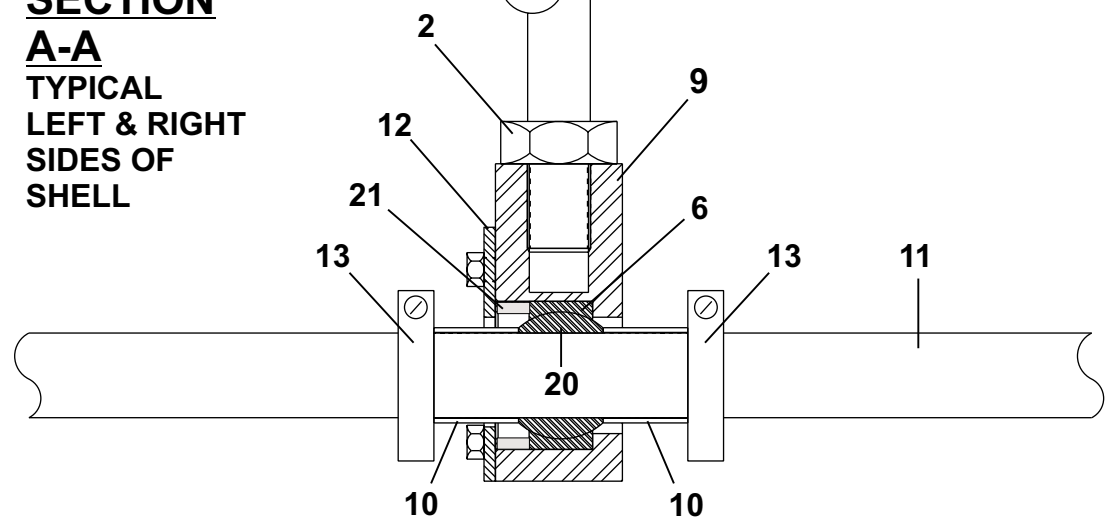
Pellerin Milnor Corporation
P. O. Box 400, Kenner, LA 70063-0400

Litho in U.S.A.



15,16,17
4 PLACES

**SECTION
A-A**
TYPICAL
LEFT & RIGHT
SIDES OF
SHELL



TORQUE ALL
BOLTS OF
ITEM 14 TO
30 FT. LBS.

Suspension

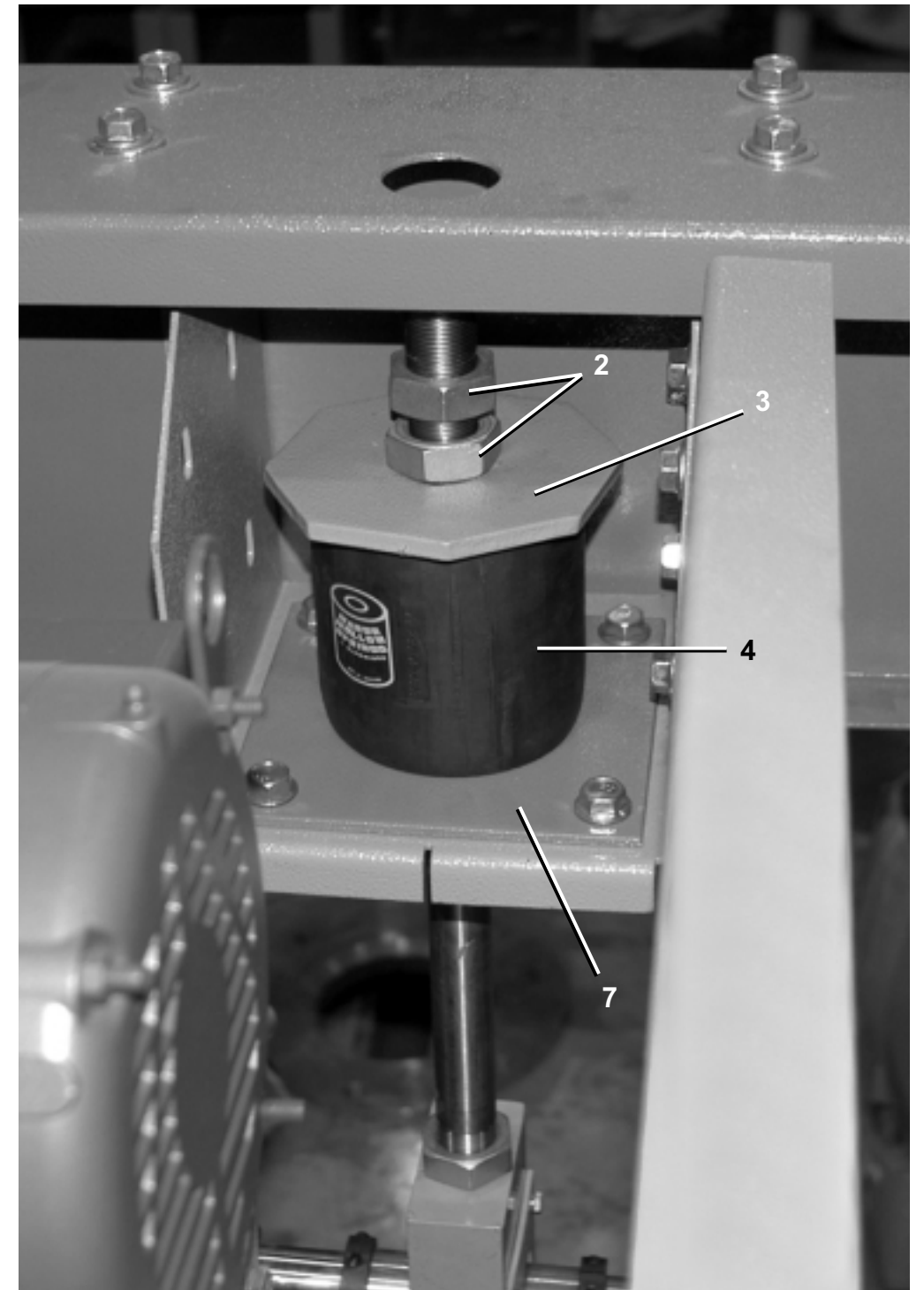
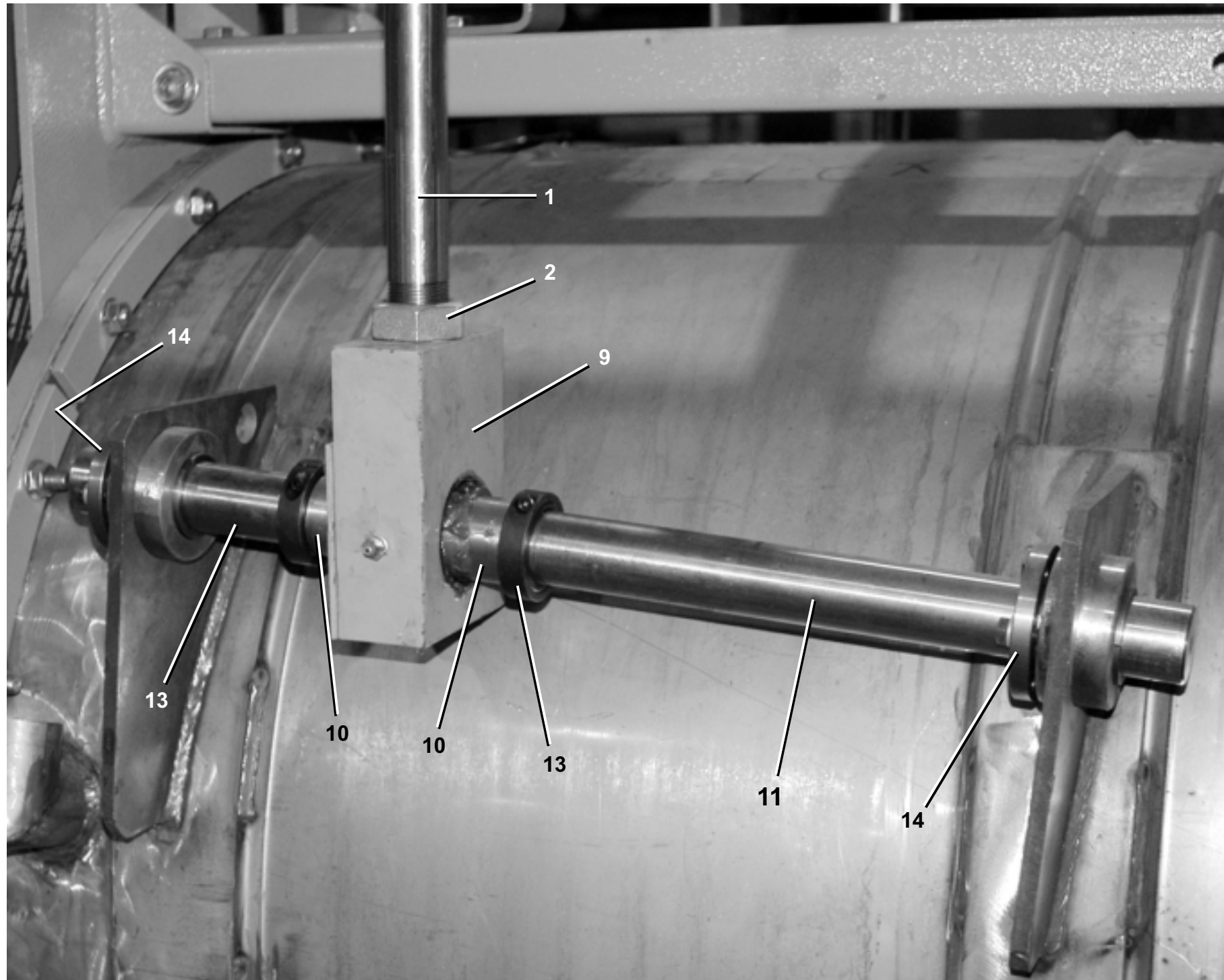
3626X8J, 4226X7J, 4232X7J

BMP040002/2004333V
(Sheet 2 of 3)



Pellerin Milnor Corporation
P. O. Box 400, Kenner, LA 70063-0400

Litho in U.S.A.





Pellerin Milnor Corporation
P. O. Box 400, Kenner, LA 70063-0400

Litho in U.S.A.

Parts List—Suspension

Find the correct assembly first, then find the needed components. The item letters (A, B, C, etc.) assigned to assemblies are referred to in the "Used In" column to identify which components belong to an assembly. The item numbers (1, 2, 3, etc.) assigned to components relate the parts list to the illustration.

Parts List—Suspension									
Find the correct assembly first, then find the needed components. The item letters (A, B, C, etc.) assigned to assemblies are referred to in the "Used In" column to identify which components belong to an assembly. The item numbers (1, 2, 3, etc.) assigned to components relate the parts list to the illustration.									
Used In	Item	Part Number	Description	Comments	Used In	Item	Part Number	Description	Comments
-----ASSEMBLIES-----									
	A	GMS3626X7	INSTAL SUSPENSION	3626X8J	A	20	54A724	BALL BUSH 1.5" AURORA HCOM-24=	
	B	GMS4226X	INSTALL SUSPENSION 4226X	4226X7J	B	20	54A732	BALLBUSH 2" AURORA # HCOM 32	
	C	GMS4232X	INSTALL SUSPENSION 4232X	4232X7J	A	21	02 13521J	SPACER=BALL BUSH	
-----COMPONENTS-----					B	21	02 23521J	SPACER=BALL BUSH	
						22	15U349A	1.275X 2.275X .129 F/W NYLON	USES 2
all	1	02 13521	ROD=SUPENSION 3626X						
all	2	15G264A	HEXJAMNUT 1+1/4-12UNF 2B ZINC						
A	3	W2 13524	WASHER SUSPENSION MT TOP 3626X						
B	3	W2 23524	WASHER=SUPENSION MT 42X						
A	4	60B136	MM SPRG 4.5X2X6 F#W223580178						
B	4	60B141	MM SPRG 6.5X2X8 F#W223580190						
all	5	54E024DRF	FLGBRG 1.25X1.5X2.0 DRF2024-16						
all	6	54A724	BALL BUSH 1.5" AURORA HCOM-24=						
A	7	02 13523	PLATE=SUPENSION MT 3626X						
B	7	02 23523	PLATE=SUPENSION MT 42X						
A	8	W2 13522	WELDMENT=BALLBUSH MT 3626X						
B	8	W2 23522	WELD=BALLBUSH MT 4226/32X						
A	9	X2 13521E	LOWER BALL BUSH MT 3626X						
B	9	X2 23521E	LOWER BALL BUSH MT 4226/32X						
A	10	02 13524D	SPACER BALL BUSHING 3626X						
B	10	02 23524D	SPACE BALL BUSHING 4226/32X						
A	11	02 13521F	ROD=SHELL SUPEN MT 3626X						
B	11	02 23521F	ROD=SHELL SUPEN MT 4226X						
C	11	02 24521F	ROD=SHELL SUPEN 4232X						
A	12	02 13521E	PLATE=SUPEN MT 3626X						
B	12	02 23521E	PLATE=SUPEN MT 4226/32X						
A	13	54JH11500A	SHAFTCOLLAR 1.5" CPL CFG#24S						
B	13	54JH22000C	SHFTCOLL 2"ID DBLSPLT CARSTL						
A	14	56Q1KP1	1+1/2" BUSH VPUL BROWNING P1						
B	14	56Q2AQ1S	2.0 SPLIT BUSH B#Q1						
all	15	15K147	HXCAPSCR 1/2-13UNC2X1 GR5 ZINC						
all	16	15U300	LOKWASHER REGULAR 1/2 ZINC PLT						
all	17	15G230	HXNUT 1/2-13UNC2B SAE ZINC GR2						
all	18	15K041	HXCAPSCR 1/4-20UNC2AX1 GR 5 ZI						
all	19	15U180	LOCKWASHER MEDIUM 1/4 ZINCPL						