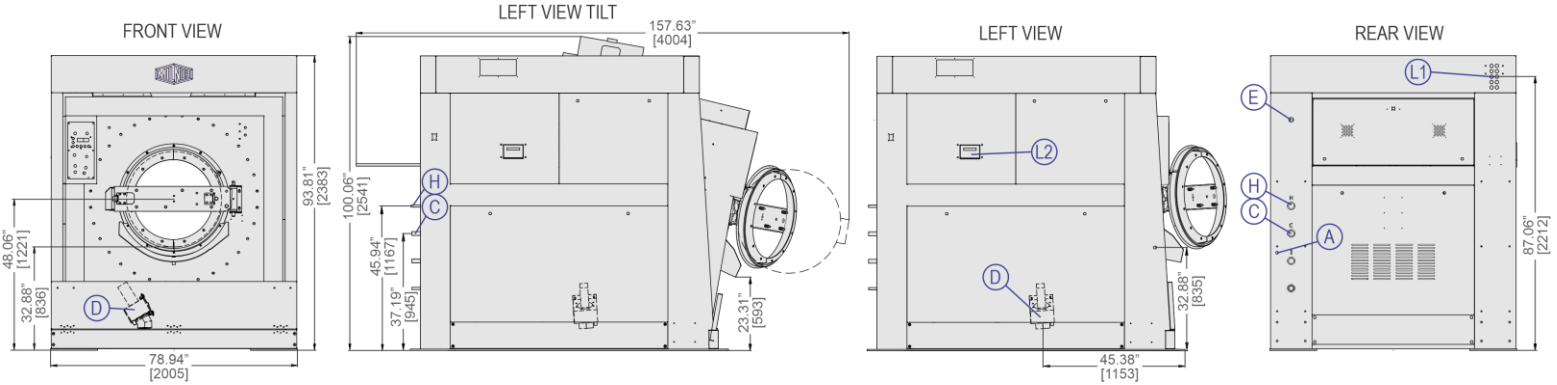


MWF125C7

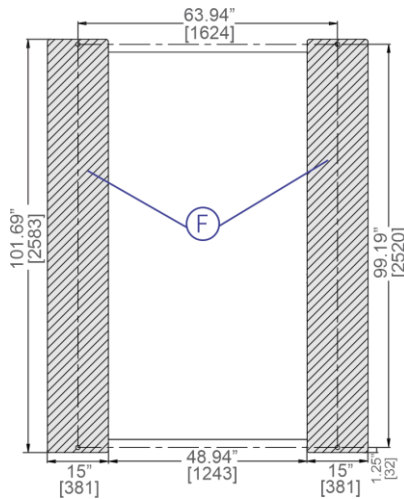
275 LB. (125KG) CAPACITY

SUSPENDED WASHER-EXTRACTOR

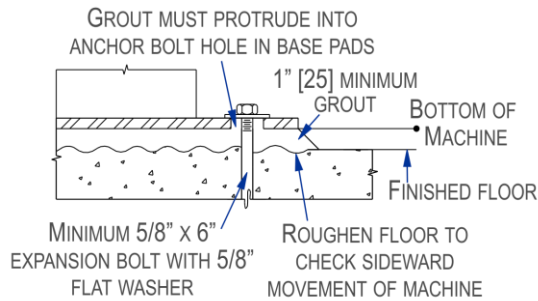
SPECIFICATION SHEET



FOUNDATION



ANCHORING DETAIL



LEGEND

A	Air inlet .25" (6.3mm) NPT
C	Cold water inlet 1.5" (38 mm) NPT
D	Drain to bottom 4.5" (114 mm) PSJ
E	Electrical connection
F	Foundation pads
H	Hot water inlet 1.5" (38 mm) NPT
L1	Liquid soap inlets
L2	Soap chute

MECHANICAL SPECIFICATIONS

Capacity – lb. (kg)	275 (125)
Cylinder Diameter x Depth – in. (mm)	48x40 (1219x1016)
Cylinder Volume – cu. ft. (L)	42 (1189)
Door Opening – in. (mm)	30.38 (771)
Machine Dimensions (W x D x H) – in. (mm)	78.94x101.69x93.82 (2005x2583x2383)
Shipping Dimensions (W x D x H) – in. (mm)	80.87x102.87x100 (2054x2613x2540)
Motor – HP (kW)	25 (18.5)
Wash Speeds – RPM	31
Distribution Speed – RPM	65
Max. Final Extract – RPM	664
Extraction G-Force	300
Static Weight – lb. (kg) ✧	10,588 (4807)
Max. Dynamic Load RMS – lb. (kg) ✧	1650 (749)
Frequency – Hz	11.07
Water Pressure ^(Required) psi (bar)	10-75 (.68-5.1)
Water Valve Cv Rating at 72°F (22°C)	11.65 (44.1)
Minimum Recommended Distance Between Machines – in. (mm)	16 (406)

ELECTRICAL SPECIFICATIONS

Voltage	Running Amps	Fuse (Amps)	Circuit Breaker (Amps)
208/3/60	62	FRN75	75
220/3/50-60	60	FRN75	75
240/3/60	59	FRN75	75
380/3/50-60	33	FRS50	50
415/3/50	33	FRS50	50
480/3/60	32	FRS50	50

See Fuse and Wire Size manual MAEFUSE1BE for safety information. Contact factory regarding single phase availability.

▼ See dimensional drawing for complete details.

✧ It is the sole responsibility of the owner/user to assure that the floor and/or any other supporting structure exceeds not only all applicable building codes, but also that the floor and/or any other supporting structure for each washer-extractor or group of washer-extractors has sufficient strength and rigidity (i.e., a natural or resonant frequency many times greater than the rotational machine speed with a reasonable factory of safety) to support the weight of all the fully loaded machine(s) including the weight of the water and goods, and including the published 360° rotating sinusoidal RMS forces that are transmitted by the machine(s). Contact the factory for additional machine data for use by a structural engineer.



MWF125C7

275LB. (125KG) CAPACITY

SUSPENDED WASHER-EXTRACTOR

SPECIFICATION SHEET

Standard Features:

- RinSave® water saving technology
- 13.5° tilting forward
- 7 speeds (2 wash, 1 distribution, 1 RinSave, 3 extract)
- E-P Plus® Controller
- Back-lit LCD display
- Single-motor inverter drive
- Tall, lifting ribs
- Tapered roller bearings
- High M.A.F. (Mechanical Action Factor)
- Large cylinder perforations
- Fresh-water flushing chemical manifold
- Ten (10) liquid chemical injection ports
- Control reads in English/second language

Why Purchase Milnor?

- RinSave® water saver in conjunction with large cylinder perforations provides more efficient rinsing. **BENEFIT: Saves water, energy, and time.**
- Larger cylinder volume than most competitive similar sized washer-extractors provides *greater productivity*. More linen washed per day, or fewer hours required to process. **BENEFIT: Saves labor.**
- Greater cylinder perforated-area generates *better wash quality, better rinsing and better extraction*. **BENEFIT: Better extraction saves dryer fuel.**
- Faster process times reduce fabric wear, promoting *longer linen life!* **BENEFIT: Saves linen replacement costs.**
- Tall ribs provide excellent lift and high drop. **BENEFIT: Greater mechanical action (M.A.F.) leads to better wash quality.**
- 300-G high extract provides excellent moisture removal. Lower extract speeds are available for uniforms, delicate textiles and blended fabrics. **BENEFIT: Better extraction saves dryer fuel.**
- E-P Plus® Controller with back-lit LCD display allows operator to choose formulas from real words, not codes. Standard controller features English/Spanish (other languages optional). Controller also provides diagnostic and error messages. Shortens training time of new employees. **BENEFIT: Fewer operator errors.**
- Superior product support through local, highly-skilled dealers. **BENEFIT: Faster repairs mean less downtime.**

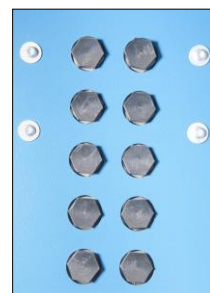
Contact Milnor for your local, authorized dealer:

Pellerin Milnor Corporation
P. O. Box 400 • Kenner, LA 70063
t: 504-467-9591

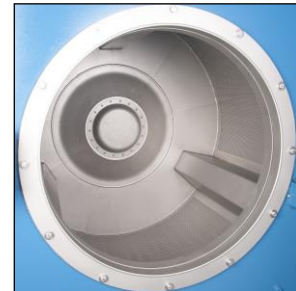


Optional Features:

- Steam
- Electric heat
- 5 compartment flushing supply injector



Safe chemical injection



Superior cylinder design



SmoothCoil™ 4 Point Suspension System

