

M190DR

190-lb. Capacity OPL Dryer

Standard Features:

- 190-lb. capacity
- 61.20 cu. ft. volume
- 404,000 Btu/hr heat input, 2,600 cfm airflow
- Radial airflow
- Steel door with gasketless glass
- Self-diagnostic microprocessor with patented auto-drying feature
- Easy access to lint compartment
- Available in gas
- Reversing basket
- Four-Point roller support system
- Stainless steel basket

Optional Features:

- Stainless steel front and cabinet
- F.S.S. (Fire Suppression System)



M190DR OPL Dryer

Why Purchase Milnor M190DR?

Engineer Driven Design That is Built to Last

Our dryers showcase an engineer-driven approach to design. Bearings are permanently lubricated on the motor and drive system. There are no chains used; rather, we use V-belts and pulleys for smooth, quiet, and trouble-free operation. Our dryer cabinets are electrostatically powder-painted inside and out, then baked at 420 degrees Fahrenheit before final assembly – ensuring the hardest surface and the longest-lasting finish in the industry.

Rugged Steel Door with Gasketless Door Glass

Our dryer doors are one solid piece of steel with gasketless glass. This eliminates the issue of glass falling out due to wear and tear on rubber gaskets that some manufacturers use to secure their glass. The security and durability that gasketless glass provides is essential to longevity.

Easy-to-Read, Multilingual Controls

Our dryers were one of the first computer-operated dryers on the market, and we continue to apply innovative technology to dryer operation. Our accessible design, easy-to-read LED screens, and our user-friendly multilingual interface position Milnor as a leader in the laundry industry.

Your local Milnor independent authorized distributor



M190DR

M190DR Specifications

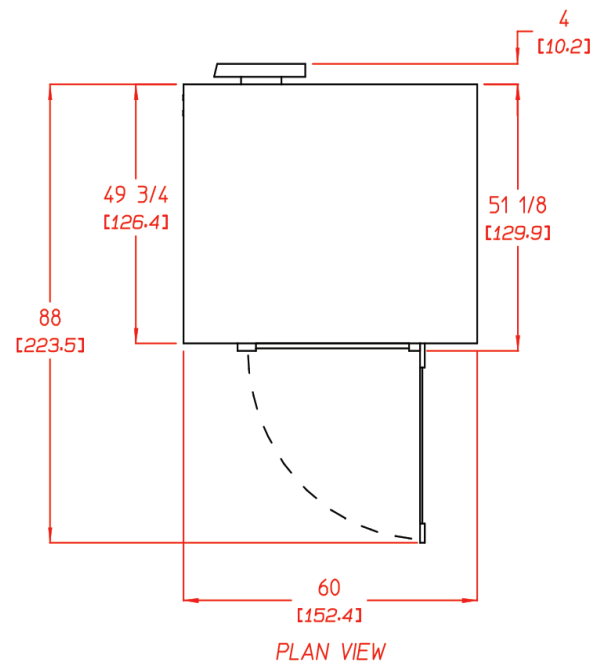
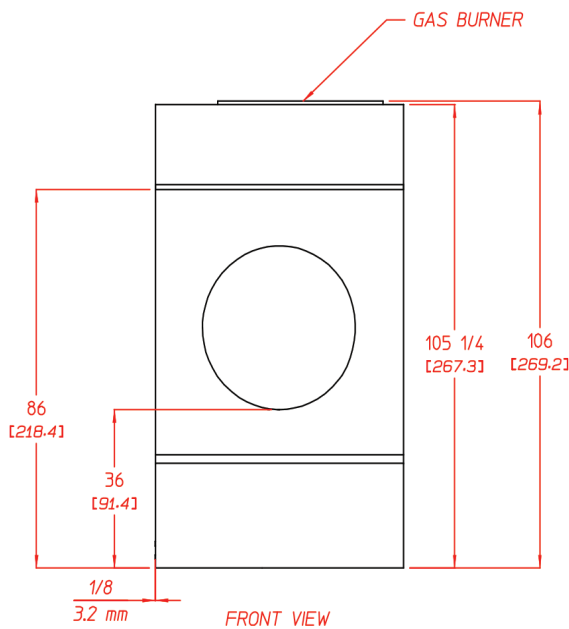
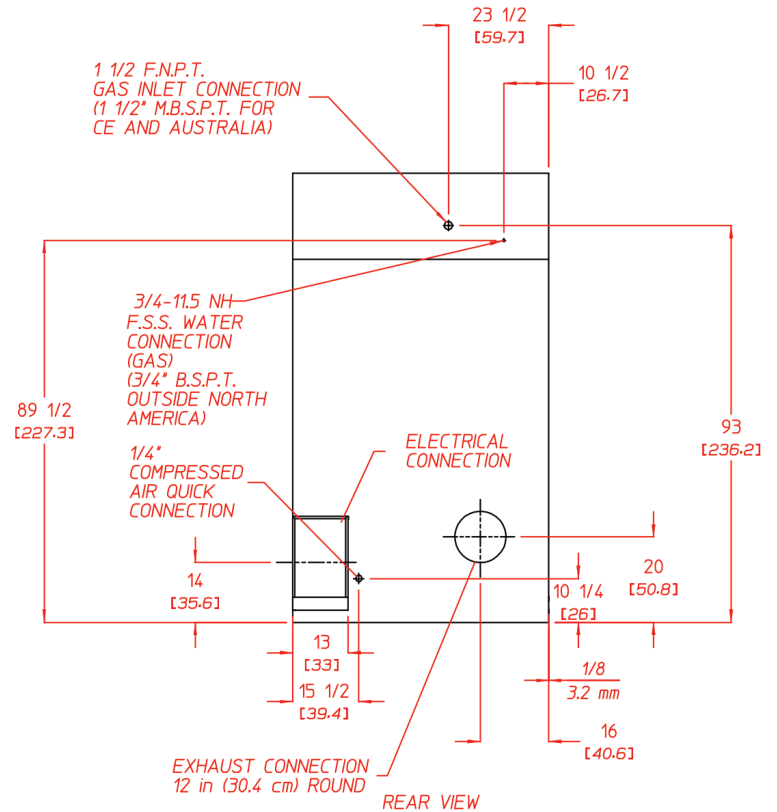
Maximum Capacity (Dry Weight)	190 lb	86.18 kg	
Tumbler Diameter	55-5/8"	141.29 cm	
Tumbler Depth	43-1/2"	110.49 cm	
Tumbler Volume	61.2 cu ft	1732.99 L	
Tumbler/Drive Motor	3 hp	2.24 kW	
Blower/Fan Motor	7-1/2 hp	5.59 kW	
Door Opening (Diameter)	31-3/8"	79.71 cm	
Door Sill Height	36"	91.44 cm	
Water Connection	3/4" - 11.5 NH (North America) 3/4" B.S.P.T. (Outside North America)		
Dryers per 20'/40' Container	3 / 7		
Dryers per 48'/53' Truck	8 / 8		
GAS	Voltage Available	208-575v 3ø 3, 4w 50/60 Hz	
	Approximate Net Weight	2,100 lb	952.54 kg
	Approximate Shipping Weight	2,166 lb	982.48 kg
	Airflow	2,600 cfm	73.6 cmm
	Heat Input	404,000 Btu/hr	101,874 kcal/hr
	Exhaust Connection (Diameter)	12"	30.48 cm
	Compressed Air Connection	1 / 4" Quick Connection	
	Compressed Air Volume	4.25 cfh	0.12 cmh
	Inlet Pipe Connection	1-1/2" F.N.P.T.	
		1-1/2" M.B.S.P.T. (CE and Australia)	

Shaded areas are stated in metric equivalents

5/17/18

DRYER NOTES:

- DUCTWORK SIZE VARIES WITH INSTALLATION CONDITIONS.
- EXHAUST STATIC PRESSURE MUST BE NO LESS THAN 0 AND MUST NOT EXCEED 0.3" (0.74 MB) WATER COLUMN.



Pellerin Milnor Corporation, PO Box 400, Kenner, LA 70063 USA
Phone 504.712.7656 Toll-Free: 800.469.8780 Fax: 504.468.3094

www.milnor.com

QY180023