

M175

170-lb Capacity OPL Dryer

Standard Features:

- 170-lb. capacity
- 50.76 cu. ft. basket volume
- 550,000 btu/hr heat input, 3,700 cfm. airflow
- Radial airflow
- Steel door with gasketless glass
- 18" Diameter vent connection
- Front serviceable
- Only occupies 19.7 sq. ft.
- Available in gas and steam heat
- Four-Point Roller Support System
- Stainless steel basket
- Reversing Basket

Optional Features:

- Stainless steel front and cabinet
- F.S.S. (Fire Suppression System)



M175 OPL Dryer

Why Purchase Milnor M175?

Engineer Driven Design That is Built to Last

Our dryers showcase an engineer-driven approach to design. Bearings are permanently lubricated on the motor and drive system. There are no chains used; rather, we use V-belts and pulleys for smooth, quiet, and trouble free operation. Our dryer cabinets are electrostatically powder-painted inside and out then baked at 420-degrees fahrenheit before final assembly - ensuring the hardest surface and the longest lasting finish in the industry.

Component Accessibility

The M175 is a single pocket dryer that offers 98% component accessibility from the front of the tumbler. This feature allows the dryer to be placed against the wall without concern for regular rear maintenance. The M175 has a large lightweight lint drawer that is accessible and easy to clean -- only requiring cleaning once a day. It's fine, stainless steel lint screen is standard.

Rugged Steel Door with Gasketless Door Glass

Our dryer doors are one solid piece of steel with gasketless glass. This eliminates the issue of glass falling out due to wear and tear on rubber gaskets that some manufacturers use to secure their glass. The security and durability that gasketless glass provides is essential to longevity.

Easy-to-Read, Multilingual Controls

Our dryers were one of the first computer operated dryers on the market and we continue to apply innovative technology to dryer operation. Our accessible design, easy-to-read LED screens and our user friendly multilingual interface positions Milnor as a leader in the laundry industry.

Your local Milnor independent authorized distributor



M175

ML-175 Specifications

		170 lb	77.11 kg	
Maximum Capacity (dry weight)		170 lb	77.11 kg	
Tumbler Diameter		51-1/8"	129.86 cm	
Tumbler Depth		42-3/4"	108.59 cm	
Tumbler Volume		50.76 cu ft	1,437.36 L	
Tumbler / Drive Motor		3 hp	2.24 kW	
Blower / Fan Motor		7-1/2 hp	5.59 kW	
Door Opening (diameter)		31-3/8"	79.71 cm	
Door Sill Height		36-1/4"	92.08 cm	
Water Connection		3/4"-11.5 NH (North America) 3/4" B.S.P.T. (Outside North America)		
Dryers per 20'/40' Container		3 / 7		
Dryers per 48'/53' Container		8 / 8		
GAS MODEL	Voltage Available	208-575v	3ø 3,4w 50/60 Hz	
	Approximate Net Weight	1,848 lb	838.24 kg	
	Approximate Shipping Weight	2,014 lb	913.54 kg	
	Airflow	60 Hz/50 Hz	3,700 cfm	104.77 cmm
	Heat Input		550,000 Btu/hr	138,598 kcal/hr
	Exhaust Connection (diameter)	18"	45.72 cm	
	Compressed Air Connection	1/4" Quick Connection		
	Compressed Air Volume	4.25 cfm	0.12 cmh	
	Inlet Pipe Connection	1-1/2" F.N.P.T.		
		1-1/2" B.S.P.T. (CE and Australia Only)		
ELECTRIC MODEL	Voltage Available	N/A		
	Approximate Net Weight	N/A		
	Approximate Shipping Weight	N/A		
	Airflow	N/A		
	Exhaust Connection (diameter)	N/A		
	Compressed Air Connection	N/A		
	Compressed Air Volume	N/A		
	Oven Size	N/A		
	STEAM MODEL	Voltage Available	208-575v	3ø 3,4w 50/60 Hz
		Approximate Net Weight	2,001 lb	907.64 kg
Approximate Shipping Weight		2,168 lb	983.39 kg	
Airflow		60 Hz/50 Hz	4,400 cfm	124.59 cmm
Steam Consumption (Max)		520 lb/hr	236 kg/hr	
Operating Steam Pressure		125 psi max	8.62 bar	
Exhaust Connection (diameter)		20"	50.80 cm	
Compressed Air Connection		1/4" Quick Connection		
Compressed Air Volume	4.25 cfm	0.12 cmh		
Boiler Horsepower (Normal Load)	14.5 Bhp			
Supply Connection	(1) 1-1/2" N.P.T. (Female)			
Return Connection	(1) 1-1/2" N.P.T. (Female)			

IMPORTANT: Dryer requires a clean, dry and regulated 80 PSI +/- 10 PSI (5.51 bar +/- 0.68 bar) air supply.

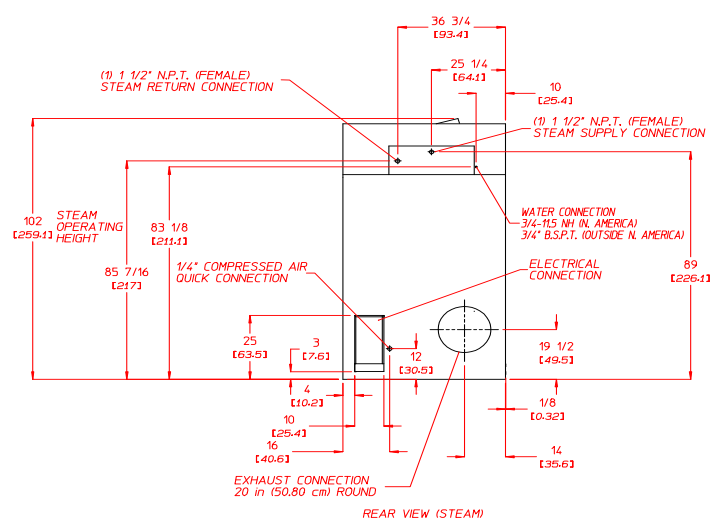
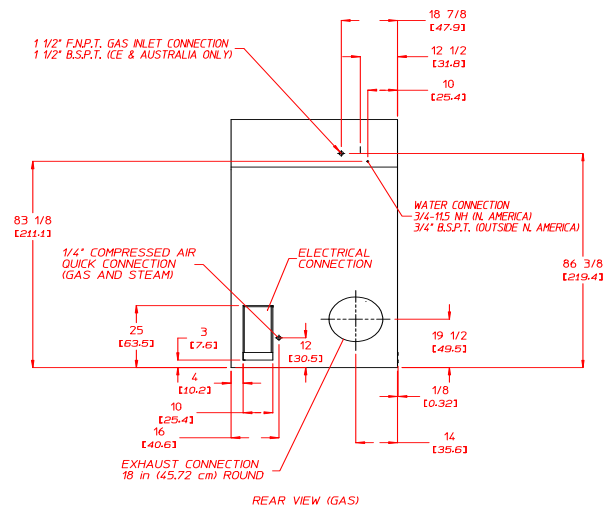
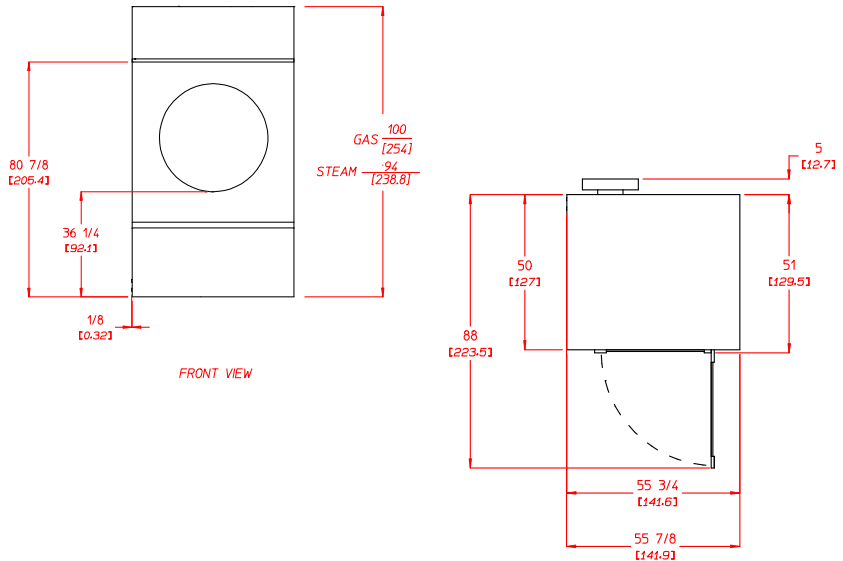
REV 04/05/15

DRYER NOTES:

- DUCTWORK SIZE VARIES WITH INSTALLATION CONDITIONS.
- EXHAUST STATIC PRESSURE MUST BE NO LESS THAN 0 AND MUST NOT EXCEED 0.3' (0.74 MB) WATER COLUMN.
- DRYER REQUIRES A CLEAN, DRY, REGULATED 80 PSI ± 10 PSI (5.5 BAR ± 0.69 BAR) AIR SUPPLY.

STEAM DRYER NOTES:

- SIZE OF PIPING TO DRYER VARIES WITH INSTALLATION CONDITIONS. CONTACT FACTORY FOR ASSISTANCE.



Electrical Service Specifications						
SERVICE VOLTAGE	PHASE	WIRE SERVICE	OVEN KW	APPROX AMP DRAW		CIRCUIT BREAKER
				60 Hz	50 Hz	
GAS & STEAM						
208	3ø	3	--	36	--	50
220	3ø	3	--	36	--	50
240	3ø	3	--	34	--	50
440	3ø	3	--	18	--	25
460	3ø	3	--	18	--	25
480	3ø	3	--	18	--	25
575	3ø	3	--	13	--	20
230	3ø	3	--	--	31	40
380	3ø	4	--	--	17	25
400	3ø	4	--	--	17	25
416	3ø	4	--	--	16	20



Pellerin Milnor Corporation, PO Box 400, Kenner, LA 70063 USA,
Phone 504.712.7656 Toll Free: 800.469.8780 Fax: 504.468.3094

www.milnor.com