

M130DR

120-lb. Capacity OPL Dryer

Standard Features:

- 120-lb. capacity
- 38.10 cu. ft. volume
- 300,000 Btu/hr heat input and 1,750 cfm
- Radial airflow
- Steel door with gasketless glass
- 12" diameter vent connection
- Available in gas
- Reversing basket

Optional Features:

- Stainless steel front, cabinet & basket
- F.S.S. (Fire Suppression System)

Why Purchase Milnor M130DR?

Engineer Driven Design That is Built to Last

Our dryers showcase an engineer-driven approach to design. Bearings are permanently lubricated on the motor and drive system. There are no chains used; rather, we use V-belts and pulleys for smooth, quiet, and trouble-free operation. Our dryer cabinets are electrostatically powder-painted inside and out, then baked at 420 degrees Fahrenheit before final assembly – ensuring the hardest surface and the longest-lasting finish in the industry.

Rugged Steel Door with Gasketless Door Glass

Our dryer doors are one solid piece of steel with gasketless glass. This eliminates the issue of glass falling out due to wear and tear on rubber gaskets that some manufacturers use to secure their glass. The security and durability that gasketless glass provides is essential to longevity.

Easy-to-Read, Multilingual Controls

Our dryers were one of the first computer-operated dryers on the market and we continue to apply innovative technology to dryer operation. Our accessible design, easy-to-read LED screens, and our user-friendly multilingual interface position Milnor as a leader in the laundry industry.

Your local Milnor independent authorized distributor

OPL



M130DR OPL Dryer



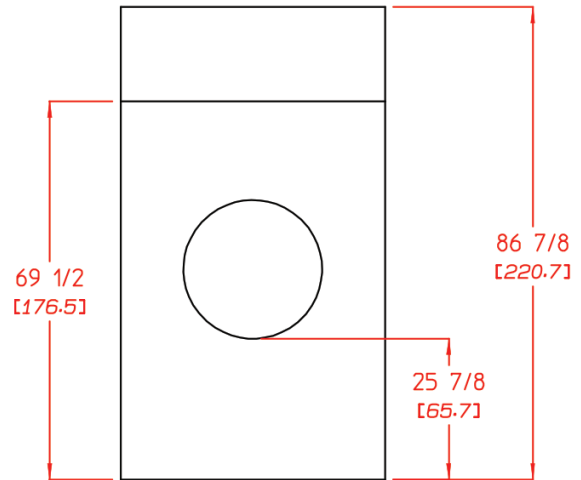
M130DR

M130DR Specifications

Maximum Capacity (Dry Weight)	120 lb	54.43 kg
Tumbler Diameter	44-1/2"	113.03 cm
Tumbler Depth	42-1/2"	107.95 cm
Tumbler Volume	38.20 cu ft	1081.704 L
Tumbler/Drive Motor	3/4 hp	0.560 kW
Blower/Fan Motor	3 hp	2.24 kW
Door Opening (Diameter)	31-3/8"	79.71 cm
Door Sill Height	25-7/8"	65.72 cm
Water Connection	3/4" - 11.5 NH	
Dryers per 20'/40' Container	3 / 7	
Dryers per 48'/53' Truck	9 / 10	
GAS	Voltage Available	208-575v 3ø 3, 4w 60 Hz
	Approximate Net Weight	1,440 lb 653.2 kg
	Approximate Shipping Weight	1,500 lb 680.4 kg
	Airflow	1,750 cfm 49.55 cmm
	Heat Input	300,000 Btu/hr 75,599 kcal/hr
	Exhaust Connection (Diameter)	12" 30.48 cm
	Compressed Air Connection	N / A
	Compressed Air Volume	N / A
	Inlet Pipe Connection	3/4" M.N.P.T.

DRYER NOTES:

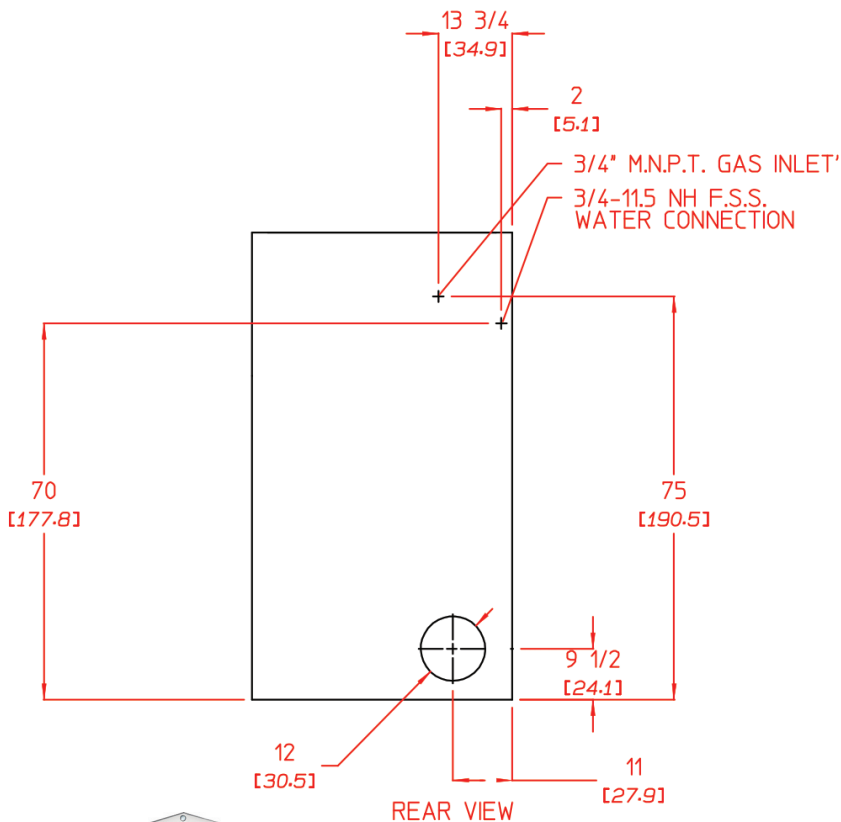
- DUCTWORK SIZE VARIES WITH INSTALLATION CONDITIONS.
- EXHAUST STATIC PRESSURE MUST BE NO LESS THAN 0 AND MUST NOT EXCEED 0.6" (1.48 mB) WATER COLUMN



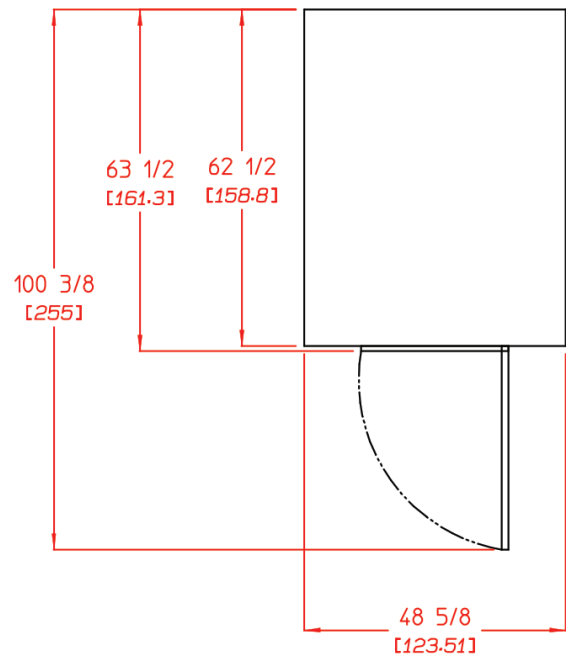
FRONT VIEW

Shaded areas are stated in metric equivalents

2/22/10



REAR VIEW



PLAN VIEW



Pellerin Milnor Corporation, PO Box 400, Kenner, LA 70063 USA
Phone 504.712.7656 Toll-Free: 800.469.8780 Fax: 504.468.3094

www.milnor.com

QY180020