

M82

80-lb Capacity OPL Dryer

Standard Features:

- 80-lb. capacity
- 22.4 cu. ft basket volume
- 270,000 btu/hr heat input, 1,700 cfm. airflow
- Radial airflow
- Steel door with gasketless glass
- 14" diameter vent connection
- Steel door with gasketless glass
- Fits through standard 42" door
- Available in gas and steam heat
- Reversing Basket

Optional Features:

- Stainless steel front, cabinet & basket
- F.S.S. (Fire Suppression System)



M82 OPL Dryer

Why Purchase Milnor M82?

Engineer Driven Design That is Built to Last

Our dryers showcase an engineer-driven approach to design. Bearings are permanently lubricated on the motor and drive system. There are no chains used; rather, we use V-belts and pulleys for smooth, quiet, and trouble free operation. Our dryer cabinets are electrostatically powder-painted inside and out then baked at 420-degrees fahrenheit before final assembly-ensuring the hardest surface and the longest lasting finish in the industry.

Rugged Steel Door with Gasketless Door Glass

Our dryer doors are one solid piece of steel with gasketless glass. This eliminates the issue of glass falling out due to wear and tear on rubber gaskets that some manufacturers use to secure their glass. The security and durability that gasketless glass provides is essential to longevity.

Easy-to-Read, Multilingual Controls

We were the first to bring computer operated dryers to the market and today we continue to be a leader in applying technology to dryer operation. Our years of experience along with our accessible design, easy-to-read LED screens and our user friendly multilingual interface positions ADC as the pioneer in the laundry industry.

Your local Milnor independent authorized distributor



M82

ML-82 Specifications

Tumbler Diameter	37"	94 cm
Tumbler Depth	36"	91.5 cm
Tumbler Volume	22.4 cu ft	634.29 L
Tumbler / Drive Motor	1/2 hp	0.373 kW
Blower / Fan Motor	3 hp	2.2 kW
Door Opening (diameter)	31-3/8"	79.7 cm
Door Sill Height	25"	63.5 cm
Water Connection	3/4"-11.5 NH (North America) 3/4" B.S.P.T. (Outside North America)	
Dryers per 20'/40' Container	9 / 20	
Dryers per 48'/53' Container	24 / 26	
GAS MODEL	Voltage Available	208-460V 3ø 3,4w 50/60 Hz
	Approximate Net Weight	833 lb 377.8 kg
	Approximate Shipping Weight	883 lb 400.5 kg
	Airflow	60 Hz 1,700 cfm 48.14 cmm 50 Hz 1,417 cfm 40.12 cmm
	Heat Input	270,000 Btu/hr 68,040 kcal/hr
	Exhaust Connection (diameter)	14" 35.56 cm
Compressed Air Connection	N / A	
Compressed Air Volume	N / A	
Inlet Pipe Connection	1" F.N.P.T.	
	1" B.S.P.T. (CE and Australia Only)	
ELECTRIC MODEL	Voltage Available	
	Approximate Net Weight	
	Approximate Shipping Weight	
	Airflow	N/A
	Exhaust Connection (diameter)	
	Compressed Air Connection	
STEAM MODEL*	Voltage Available	208-460V 3ø 3,4w 50/60 Hz
	Approximate Net Weight	928 lb 420.9 kg
	Approximate Shipping Weight	978 lb 443.6 kg
	Airflow	60 Hz 1,700 cfm 48.14 cmm 50 Hz 1,417 cfm 40.12 cmm
	Steam Consumption (Max)	350 lb/hr 159 kg/hr
	Operating Steam Pressure	125 psi max 8.6 bar
	Exhaust Connection (diameter)	14" 35.56 cm
	Compressed Air Connection	1/8" F.N.P.T.
	Compressed Air Volume	0.75 cfm 0.02 cmh
	Boiler Horsepower (Normal Load)	11 Bhp
Supply Connection	(1) 1" N.P.T. (Female)	
Return Connection	(1) 1" N.P.T. (Female)	

* Air operated steam damper system requires a clean, dry, and regulated 80 PSI +/- 10 PSI (5.51 bar +/- 0.68 bar) air supply.

REV 04/05/15

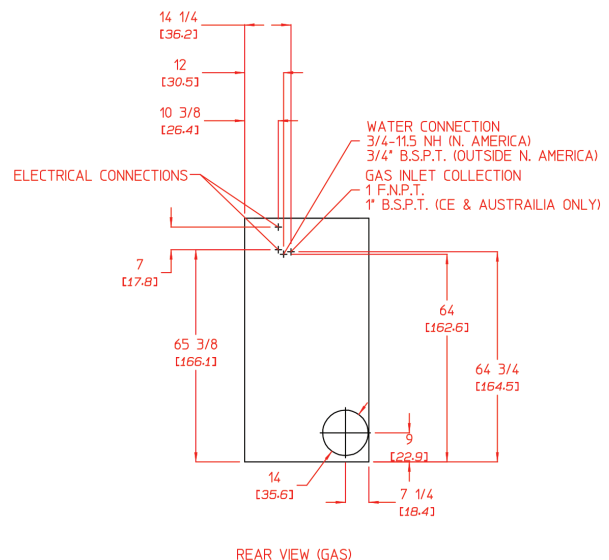
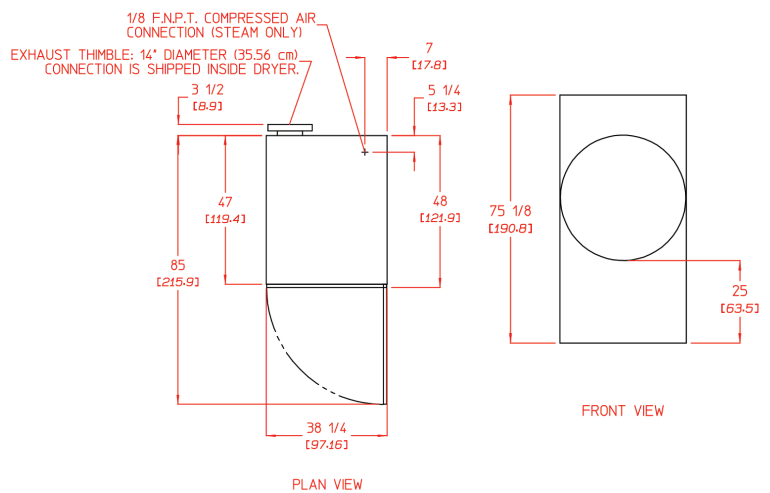
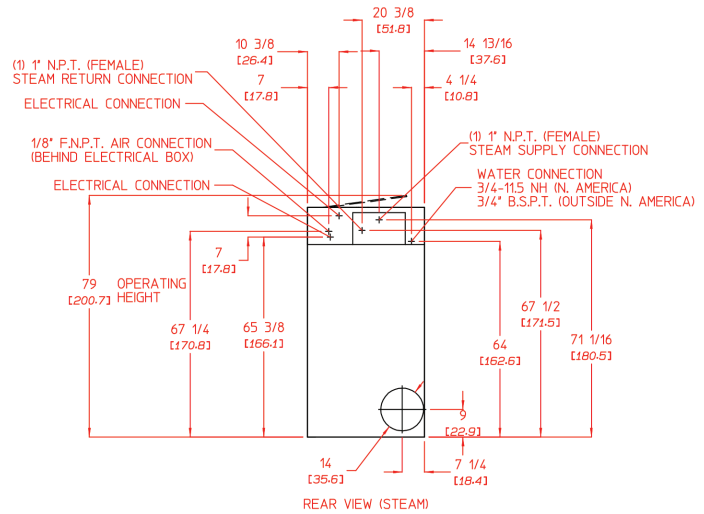
Electrical Service Specifications					
GAS					
SERVICE VOLTAGE	PHASE	WIRE SERVICE	APPROX AMP DRAW		CIRCUIT BREAKER
			60 Hz	50 Hz	
208	3ø	3	14.4	--	20
220	3ø	3	13.9	--	20
240	3ø	3	14.0	--	20
240	3ø	3	--	15.9	20
380	3ø	4"	--	8.4	15
400	3ø	4"	--	8.4	15
416	3ø	4"	--	8.7	15
440	3ø	4"	--	8.6	15
460	3ø	3	7.5	--	15
480	3ø	3	7.5	--	15

DRYER NOTES:

- * DUCTWORK SIZE VARIES WITH INSTALLATION CONDITIONS.
- * EXHAUST STATIC PRESSURE MUST BE NO LESS THAN 0 AND MUST NOT EXCEED 0.3" (0.74 MB) WATER COLUMN.

STEAM DRYER NOTES:

- * OPERATING HEIGHT OF STEAM DRYER IS 79" (200.6 CM).
- * SIZE OF PIPING TO DRYER VARIES WITH INSTALLATION CONDITIONS. CONTACT FACTORY FOR ASSISTANCE.
- * AIR OPERATED STEAM DAMPER SYSTEM REQUIRES A CLEAN, DRY, REGULATED 80 PSI +/- 10 PSI (5.5 BAR +/- 0.69 BAR) AIR SUPPLY.



Pellerin Milnor Corporation, P.O. Box 400, Kenner, LA 70063 USA,
Phone 504.712.7656 Toll Free: 800.469.8780 Fax: 504.468.3094

www.milnor.com