

# M170

## 170-lb Capacity OPL Dryer

### Standard Features:

- 170-lb. capacity
- 51.20 cu. ft basket volume
- 550,000 btu/hr heat input, 3,700 cfm. airflow
- Radial airflow
- Self diagnostic microprocessor with patented auto drying feature
- Steel door with gasketless glass
- Reversing Basket
- Available in gas, steam and electric heat

### Optional Features:

- Stainless steel front, cabinet & basket
- F.S.S. (Fire Suppression System)

OPL



M170 OPL Dryer

### Why Purchase Milnor M170?

#### Engineer Driven Design That is Built to Last

Our dryers showcase an engineer-driven approach to design. Bearings are permanently lubricated on the motor and drive system. There are no chains used; rather, we use V-belts and pulleys for smooth, quiet, and trouble free operation. Our dryer cabinets are electrostatically powder-painted inside and out then baked at 420-degrees fahrenheit before final assembly - ensuring the hardest surface and the longest lasting finish in the industry.

#### Rugged Steel Door with Gasketless Door Glass

Our dryer doors are one solid piece of steel with gasketless glass. This eliminates the issue of glass falling out due to wear and tear on rubber gaskets that some manufacturers use to secure their glass. The security and durability that gasketless glass provides is essential to longevity.

#### Easy-to-Read, Multilingual Controls

Our dryers were one of the first computer operated dryers on the market and we continue to apply innovative technology to dryer operation. Our accessible design, easy-to-read LED screens and our user friendly multilingual interface positions Milnor as a leader in the laundry industry.

Your local Milnor independent authorized distributor



# M170

## ML-170 Specifications

Maximum Capacity (dry weight)	170 lb	77.11 kg
Tumbler Diameter	51-1/2"	130.81 cm
Tumbler Depth	42-1/2"	107.95 cm
Tumbler Volume	51.20 cu ft	1,449.82 L
Tumbler / Drive Motor	1 hp	0.75 kW
Blower / Fan Motor	7-1/2 hp	5.59 kW
Door Opening (diameter)	31-3/8"	79.69 cm
Door Sill Height	33-3/8"	84.77 cm
Water Connection	3/4" -11.5 NH (North America) 3/4" B.S.P.T. (Outside North America)	
Dryers per 20'/40' Container	3 / 7	
Dryers per 48'/53' Container	8 / 9	
<b>GAS MODEL</b>		
Voltage Available	208-575V 3ø	3,4w 50/60 Hz
Approximate Net Weight	2,103 lb	953.90 kg
Approximate Shipping Weight	2,269 lb	1,029.20 kg
Airflow	60 Hz 3,700 cfm	50 Hz 3,700 cfm
Heat Input	550,000 Btu/hr	138,598 kcal/hr
Exhaust Connection (diameter)	18"	
Compressed Air Connection	1/4" Quick Connection	
Compressed Air Volume	4.25 cfm	0.12 cmh
Inlet Pipe Connection	1-1/2" F.N.P.T.	
	1-1/2" B.S.P.T. (CE and Australia Only)	
<b>ELECTRIC MODEL</b>		
Voltage Available	416-460V 3ø	3,4w 50/60 Hz
Approximate Net Weight	2,103 lb	953.90 kg
Approximate Shipping Weight	2,269 lb	1,029.20 kg
Airflow	60 Hz 3,700 cfm	50 Hz 3,700 cfm
Exhaust Connection (diameter)	18"	
Compressed Air Connection	1/4" Quick Connection	
Compressed Air Volume	4.25 cfm	0.12 cmh
Oven Size		
	kW	Btu/hr kcal/hr
	126	429,900 108,300
<b>STEAM MODEL</b>		
Voltage Available	208-480V 3ø	3,4w 50/60 Hz
Approximate Net Weight	2,259 lb	1,024.67 kg
Approximate Shipping Weight	2,425 lb	1,099.96 kg
Airflow	60 Hz 4,400 cfm	50 Hz 4,400 cfm
Steam Consumption	520 lb/hr	236 kg/hr
Operating Steam Pressure	125 psi max	8.62 bar
Exhaust Connection (diameter)	20"	
Compressed Air Connection	1/8" N.P.T.	
Compressed Air Volume	5.00 cfm	0.14 cmh
Boiler Horsepower (Normal Load)	14.5 Bhp	
Supply Connection	(1) 1-1/2" N.P.T. (Female)	
Return Connection	(1) 1-1/2" N.P.T. (Female)	

**IMPORTANT:** Dryer requires a clean, dry and regulated 80 PSI +/- 10 PSI (5.51 bar +/- 0.68 bar) air supply.

REV 04/05/15

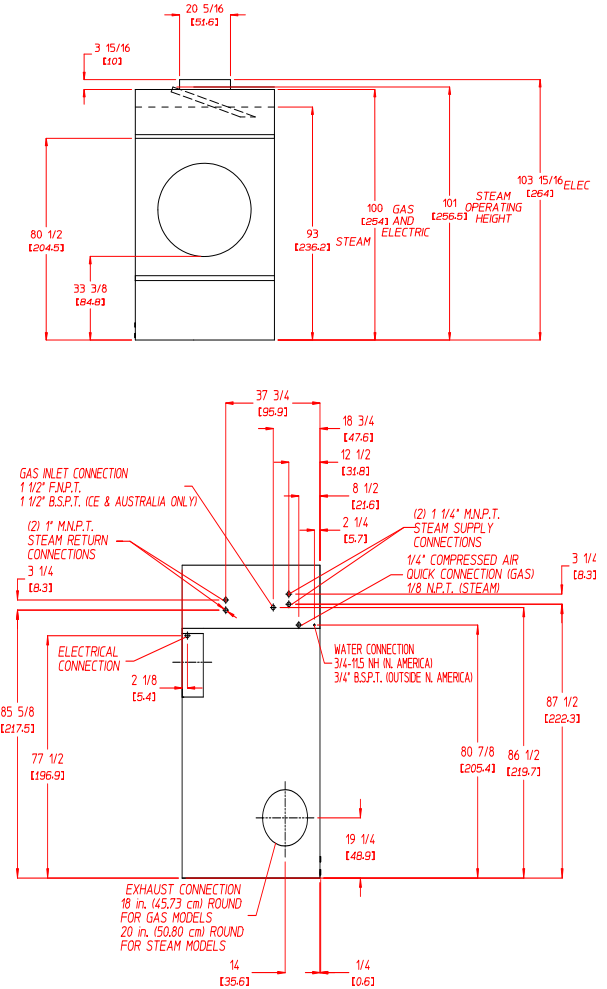
# M170

### DRYER NOTES:

- \* DUCTWORK SIZE VARIES WITH INSTALLATION CONDITIONS.
- \* EXHAUST STATIC PRESSURE MUST BE NO LESS THAN 0 AND MUST NOT EXCEED 0.3" (0.74 MB) WATER COLUMN.

### STEAM DRYER NOTES:

- \* OPERATING HEIGHT OF STEAM DRYER IS 101 [256.5]
- \* SIZE OF PIPING TO DRYER VARIES WITH INSTALLATION CONDITIONS. CONTACT FACTORY FOR ASSISTANCE.
- \* STEAM DRYERS MUST BE PROVIDED WITH CLEAN, DRY, REGULATED 80 PSI +/- 10 PSI (5.5 BAR +/- 0.69 BARI) AIR SUPPLY.



## Electrical Service Specifications

SERVICE VOLTAGE	PHASE	WIRE SERVICE	APPROX AMP DRAW		CIRCUIT BREAKER
			60 Hz	50 Hz	
<b>GAS &amp; STEAM</b>					
208	3ø	3	29	--	40
220	3ø	3	28	28	40
230	3ø	3	27	32	40
240	3ø	3	27	--	40
380	3ø	3	17	--	30
440	3ø	3	15	--	20
460	3ø	3	14	--	20
480	3ø	3	14	--	20
575	3ø	3	18	--	30
220	3ø	3	--	28	40
230	3ø	3	--	32	40
380	3ø	4*	--	17	30
400	3ø	4*	--	17	30
416	3ø	4*	--	16	20

## Electrical Service Specifications

SERVICE VOLTAGE	PHASE	WIRE SERVICE	APPROX AMP DRAW		OVEN KW	CIRCUIT BREAKER
			60 Hz	50 Hz		
<b>126 kW Electric (Nominal)</b>						
380	3ø	3	176	--	105	250
440	3ø	3	152	--	105	200
460	3ø	3	159	--	115	200
480	3ø	3	166	--	126	225
575	3ø	3	102	--	90	150
380	3ø	4	--	176	105	250
416	3ø	4	--	191	126	250



Pellerin Milnor Corporation, PO Box 400, Kenner, LA 70063 USA,  
Phone 504.712.7656 Toll Free: 800.469.8780 Fax: 504.468.3094

www.milnor.com