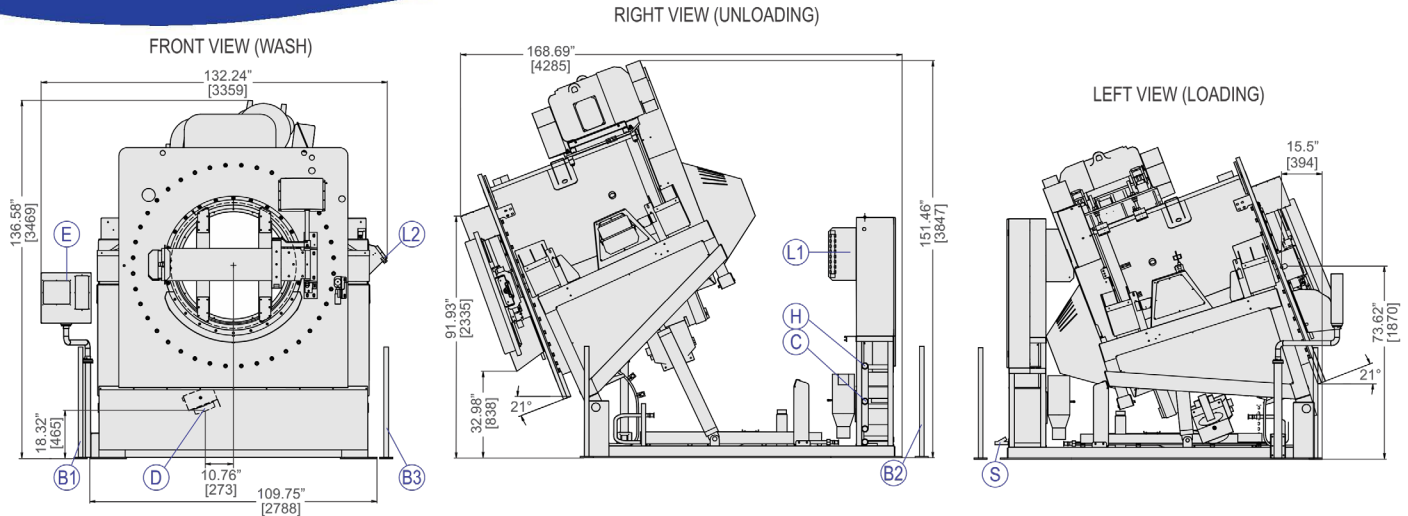


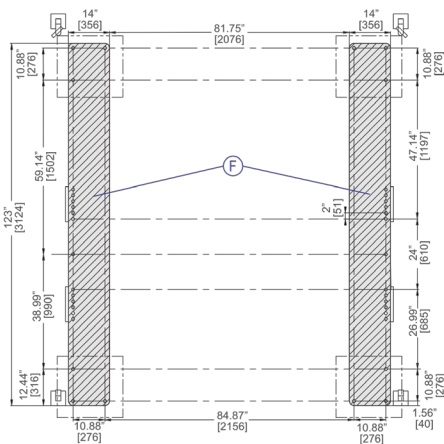
# 72046 M5K

600-700 LB. (272-318 KG) CAPACITY  
SUSPENDED WASHER-EXTRACTOR

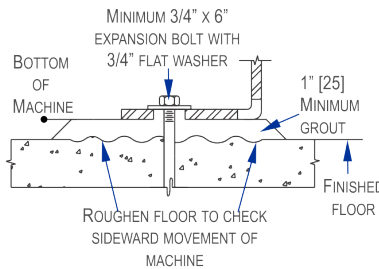
## SPECIFICATION SHEET



FOUNDATION



ANCHORING DETAIL



LEGEND

B1	Safety light screen emitter
B2	Safety light screen reflector
B3	Safety light screen receiver
C	Cold water inlet 2" (51 mm) NPT
D	Drain valve 8" (203 mm) diameter
E	Electrical connection
H	Hot water inlet 2" (51 mm) NPT
L1	8 port Peristaltic supply connection
L2	Soap chute
S	Steam inlet connection 1.25" (32 mm) NPT

### MECHANICAL SPECIFICATIONS

Capacity—lb. (kg)	600-700 (272-318)
Cylinder Diameter x Depth—in. (mm)	72 X 46 (1828x1168)
Door Opening—in. (mm)	48 (1219)
Cylinder Volume—cu. ft. (L)	108.4 (3058)
Fully Extended Machine Dimensions (WxDxH)—in. (mm)	132.24 x 168.69 x 151.46 (3359 4285 x 3847)
Shipping Dimensions (W x D x H)—in. (mm)	116 x 144 x 126 (2946 x 3657 x 3200)
Motor—HP (kW)	75 (52.19)
Wash Speeds—RPM	20-37
Distribution Speed—RPM	45
Extraction Speeds—RPM	200-542
Extraction G-Force	300
Water Pressure (Required) — psi (bar)	10-75 (0.69-5.17)
Water Valve Cv Rating at 72°F (22°C)	110 (416.4)
Minimum Recommended Distance Between Machines—in. (mm)	36 (914)
Static Weight—lb. (kg) ◇	17800 (7937)
Max. Dynamic Load RMS—lb. (kg) ◇	4200 (1905)
Frequency (Hz)	9.03

### ELECTRICAL SPECIFICATIONS

Voltage	Running Amps	Fuse (Amps)	Circuit Breaker (Amps)
208/3/60	112	FRN225	375
220/3/50-60	105	FRN200	375
240/3/60	95	FRN200	325
380/3/50-60	60	FRS120	225
400/3/50	58	FRS120	225
415/3/50	57	FRS120	225
480/3/60	50	FRS100	200
600/3/60	40	FRS80	175

See Fuse and Wire Size manual MAEFUSE1CE for safety information + confirmation of above specs.

▼ See dimensional drawing for complete details.

◇ It is the sole responsibility of the owner/user to assure that the floor and/or any other supporting structure exceeds not only all applicable building codes, but also that the floor and/or any other supporting structure for each washer-extractor or group of washer-extractors has sufficient strength and rigidity (i.e., a natural or resonant frequency many times greater than the rotational machine speed with a reasonable factory of safety) to support the weight of all the fully loaded machine(s) including the weight of the water and goods, and including the published 360° rotating sinusoidal RMS forces that are transmitted by the machine(s). Contact the factory for additional machine data for use by a structural engineer.



# 72046 M5K

600-700 LB. (272-318 KG) CAPACITY  
SUSPENDED WASHER-EXTRACTOR

## SPECIFICATION SHEET

### Standard Features:

- MilTouch-EX™ control
- Programmable overnight bath soak
- Programmable water temperature for each bath
- Dynamically-tuned suspension system
- Spherical roller bearings
- High percentage of open area cylinder perforations
- Single motor inverter drive
- 21° Tilting forward and backward
- Eight (8) liquid chemical injection ports
- Control reads in English/second language
- Removable hub for easy access to bearings
- Active balancing accommodates bulky items (mats and partial batches)

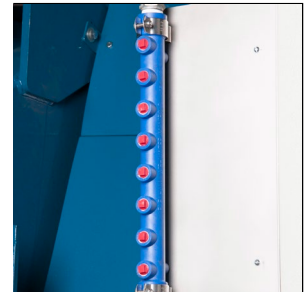


### Optional Features:

- Reuse water inlet
- Load chute door
- Five compartment flushing injector
- Light curtain (required for manual and semi-automated operation)

### Why Purchase Milnor?

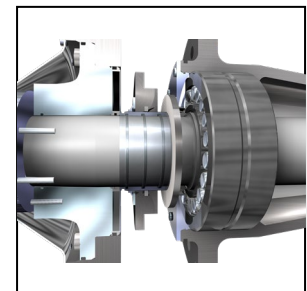
- 108.4 cu ft. (3070 L) cylinder allows for more goods to be processed at a time. **BENEFIT: Greater capacity leads to increased efficiency and less production hours.**
- MilTouch-EX™ Controller has intuitive fault diagnosis and relevant troubleshooting suggestions, which streamlines employee training and eliminates operator guesswork. Controller also provides diagnostic and error messages. Shortens training time of new employees. **BENEFIT: Fewer operator errors.**
- 300-G high extract provides excellent moisture removal. Lower extract speeds are available for uniforms, delicate textiles and blended fabrics. **BENEFIT: Better extraction saves dryer fuel.**
- Eight liquid chemical ports and 15 signals. **BENEFIT: Promotes consistency and allows flexibility.**
- Larger cylinder perforated-area generates *better wash* quality, *better rinsing* and *better extraction*. **BENEFIT: Better extraction saves dryer fuel.**
- Faster process times reduce fabric wear, promoting *longer linen life!* **BENEFIT: Saves linen replacement costs.**
- Superior product support through local, highly-skilled dealers. **BENEFIT: Faster repairs mean less downtime.**



Safe chemical injection



SmoothCoil™ suspension minimizes transmission of unwanted vibration



Bearings have quadruple seal protection

Contact Milnor for your local, authorized dealer:

Pellerin Milnor Corporation  
P.O. Box 400 • Kenner, LA 70063  
t: 504-467-9591 • f: 504-468-3094

