

# 48040F7J

## 275 lb. (125 kg) Capacity Suspended Washer-Extractor Specification Sheet



[milnor.com](http://milnor.com)



### STANDARD FEATURES:

- RinSave® water saving technology
- E-P Plus® programmable controller
- Vacuum fluorescent display
- Single-motor inverter drive
- Air-operated valves
- Programmable overnight bath soak
- Programmable water temperature for each bath
- Tapered roller bearings
- Suspension system
- Large cylinder perforations
- Ten (10) liquid chemical injection ports
- Control reads in English/second language



### OPTIONAL FEATURES:

- Reuse water inlet and drain
- 5 compartment flushing supply injector
- Hydraulically-operated automatic door

## Why Purchase Milnor?

**BENEFIT: Saves water, energy and time.** RinSave® water saver in conjunction with large cylinder perforations provides more efficient rinsing.

**BENEFIT: Saves labor.** Larger cylinder volume than most competitive, similar-sized washer-extractors provides greater productivity. More linen washed per day, or fewer hours required to process.

**BENEFIT: Saves linen replacement costs.** Faster process times reduce fabric wear, promoting longer linen life!

**BENEFIT: Greater mechanical action (M.A.F.) leads to better wash quality.**

Greater cylinder perforated area, tall rib construction and precise cylinder speeds generate better cleaning results, better rinsing, and better extraction.

**BENEFIT: Better extraction saves dryer fuel.** 300-G high extract provides excellent moisture removal. Lower extract speeds are available for uniforms, delicate textiles and blended fabrics.

**BENEFIT: Fewer operator errors.** E-P Plus® controller with vacuum fluorescent display allows operator to choose formulas from real words, not codes. Standard controller features English/Spanish (other languages optional). Controller also provides diagnostic and error messages, shortening training time of new employees.

**BENEFIT: Faster repairs mean less downtime.** Superior product support through local, highly-skilled dealers.



Safe chemical injection



Superior cylinder design



SmoothCoil™ 4 Point Suspension System

Contact Milnor for your local, authorized dealer:

**PELLERIN MILNOR CORPORATION**

P.O. Box 400, Kenner, LA 70063 • t: 504-467-9591 • [milnorinfo@milnor.com](mailto:milnorinfo@milnor.com)

# 48040F7J

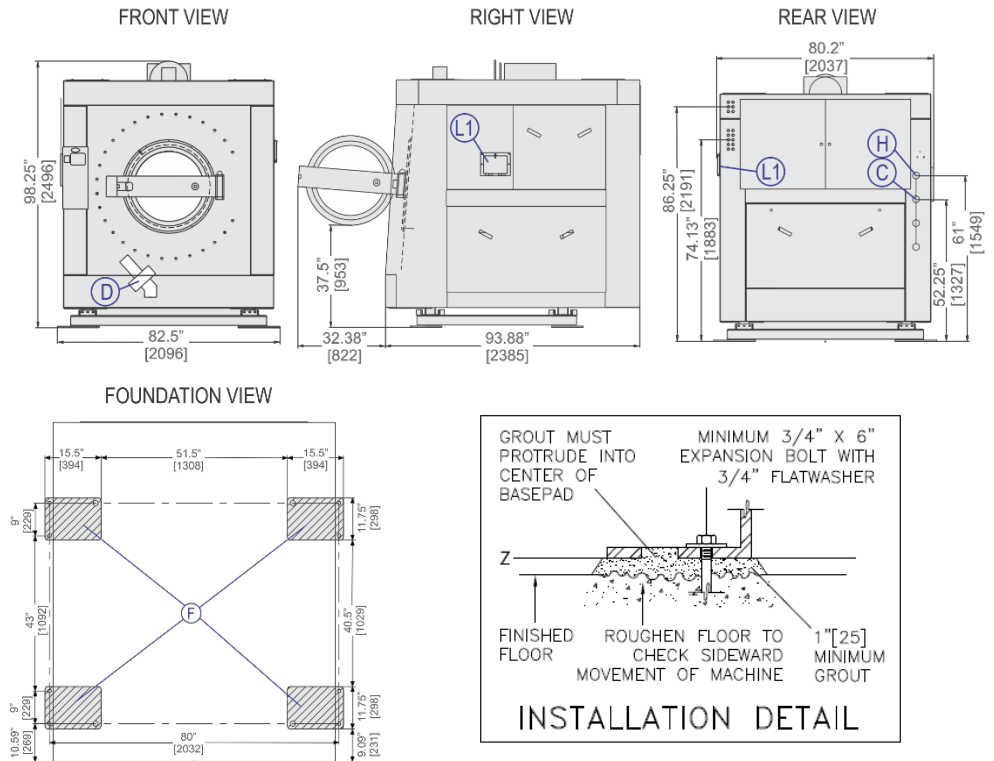
## 275 lb. (125 kg) Capacity Suspended Washer-Extractor Specification Sheet



[milnor.com](http://milnor.com)

### LEGEND

|           |                                    |
|-----------|------------------------------------|
| <b>C</b>  | Cold water inlet, 1.5" (38 mm) NPT |
| <b>D</b>  | Drain to sump, 4.5" (114 mm)       |
| <b>F</b>  | Foundation pads                    |
| <b>H</b>  | Hot water inlet, 1.5" (38 mm) NPT  |
| <b>L1</b> | Standard soap chute                |



RECOMMENDED



### MECHANICAL SPECIFICATIONS

|  |   |
|--|---|
| Capacity – lb. (kg)                              | 275 (125)                                 |
| Cylinder Diameter x Depth – in. (mm)             | 48 x 40 (1219 x 1016)                     |
| Cylinder Volume – cu. ft. (L)                    | 42 (1188)                                 |
| Door Opening – in. (mm)                          | 30.5 (775)                                |
| Machine Dimensions (W x D x H) – in. (mm)        | 82.5 x 93.88 x 98.25 (2096 x 2385 x 2496) |
| Shipping Dimensions (W x D x H) – in. (mm)       | 87 x 124 x 102.4 (2210 x 3150 x 2600)     |
| Motor – HP (kW)                                  | 25 (18.6)                                 |
| Wash Speed – RPM                                 | 30-38                                     |
| Distribution Speed – RPM                         | 66  |
| Max. Final Extract – RPM                         | 320-664                                   |
| Extraction G-Force                               | 300                                       |
| Static Weight – lb. (kg)◆                        | 11,244 (5100)                             |
| Max. Dynamic Load RMS – lb. (kg)◆                | 1460 (662)                                |
| Frequency - Hz◆                                  | 11.07                                     |
| Water Pressure <sup>(Required)</sup> – psi (bar) | 10-75 (.68-5.1)                           |
| Water Valve - Cv Rating at 72°F (22°C)           | 49.1 (185.9)                              |

### ELECTRICAL SPECIFICATIONS

| Voltage     | Running Amps | Fuse (Amps) | Circuit Breaker (Amps) |
|-------------|--------------|-------------|------------------------|
| 220/3/50-60 | 60           | FRN75       | 75                     |
| 208/3/60    | 62           | FRN75       | 75                     |
| 240/3/60    | 59           | FRN75       | 75                     |
| 380/3/50-60 | 33           | FRS50       | 50                     |
| 480/3/60    | 32           | FRS50       | 50                     |

See Fuse and Wire Size manual MAEFUSE1BE for safety information. Contact factory regarding single phase availability.

▲ See dimensional drawing for complete details.

◆ It is the sole responsibility of the owner/user to assure that the floor and/ or any other supporting structure exceeds not only all applicable building codes, but also that the floor and/or any other supporting structure for each washer-extractor or group of washer-extractors has sufficient strength and rigidity (i.e., a natural or resonant frequency many times greater than the rotational machine speed with a reasonable factory of safety) to support the weight of all the fully loaded machine(s) including the weight of the water and goods, and including the published 360° rotating sinusoidal RMS forces that are transmitted by the machine(s). Contact the factory for additional machine data for use by a structural engineer.

■ Machine bases made from concrete should either be part of a monolithic pour or should be tied into foundation and not isolated from existing floor.