

36026 X8R

100 lb. (45 kg) Capacity Suspended Washer-Extractor Specification Sheet



milnor.com



STANDARD FEATURES:

- RinSave® water saving technology
- 7 speeds (2 wash, 1 distribution, 1 RinSave, 3 extract)
- MilTouch-EX™ programmable controller
- Single-motor inverter drive
- Tall, lifting ribs
- Tapered roller bearings
- High M.A.F. (Mechanical Action Factor)
- Large cylinder perforations
- Fresh-water flushing chemical manifold
- Auto tension V-belt drive
- Sixteen (16) liquid chemical injection ports
- Control is configurable to display language of choice
- 5-year limited warranty on frame, cylinder & shell



OPTIONAL FEATURES:

- Steam
- Electric heat
- 5 compartment flushing supply injector

Why Purchase Milnor?

BENEFIT: Saves water, energy and time. RinSave® water saver in conjunction with large cylinder perforations provides more efficient rinsing.

BENEFIT: Saves labor. Larger cylinder volume than most competitive, similar-sized washer-extractors provides greater productivity. More linen washed per day, or fewer hours required to process.

BENEFIT: Saves linen replacement costs. Faster process times reduce fabric wear, promoting longer linen life!

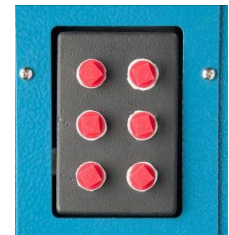
BENEFIT: Greater mechanical action (M.A.F.) leads to better wash quality.

Greater cylinder perforated area, tall rib construction and precise cylinder speeds generate better cleaning results, better rinsing, and better extraction.

BENEFIT: Better extraction saves dryer fuel. High extract provides excellent moisture removal. Lower extract speeds are available for uniforms, delicate textiles and blended fabrics.

BENEFIT: Fewer operator errors. • MilTouch-EX™ touch screen control, utilizing resistive touch screen technology and full VGA resolution, has a clear and informative display which shows current machine status info including total formula time and time elapsed. Formulas can be developed on a PC, saved to USB external memory and uploaded with a screen touch. Controller also provides intuitive fault diagnosis and relevant troubleshooting suggestions.

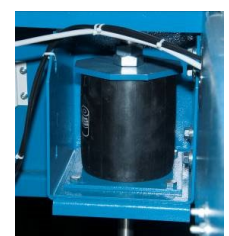
BENEFIT: Faster repairs mean less downtime. Superior product support through local, highly-skilled dealers.



Safe chemical injection



Advanced control



SmoothCoil™ suspension system

Contact Milnor for your local, authorized dealer:

PELLERIN MILNOR CORPORATION

P.O. Box 400, Kenner, LA 70063 • t: 504-467-9591 • milnorinfo@milnor.com

36026 X8R

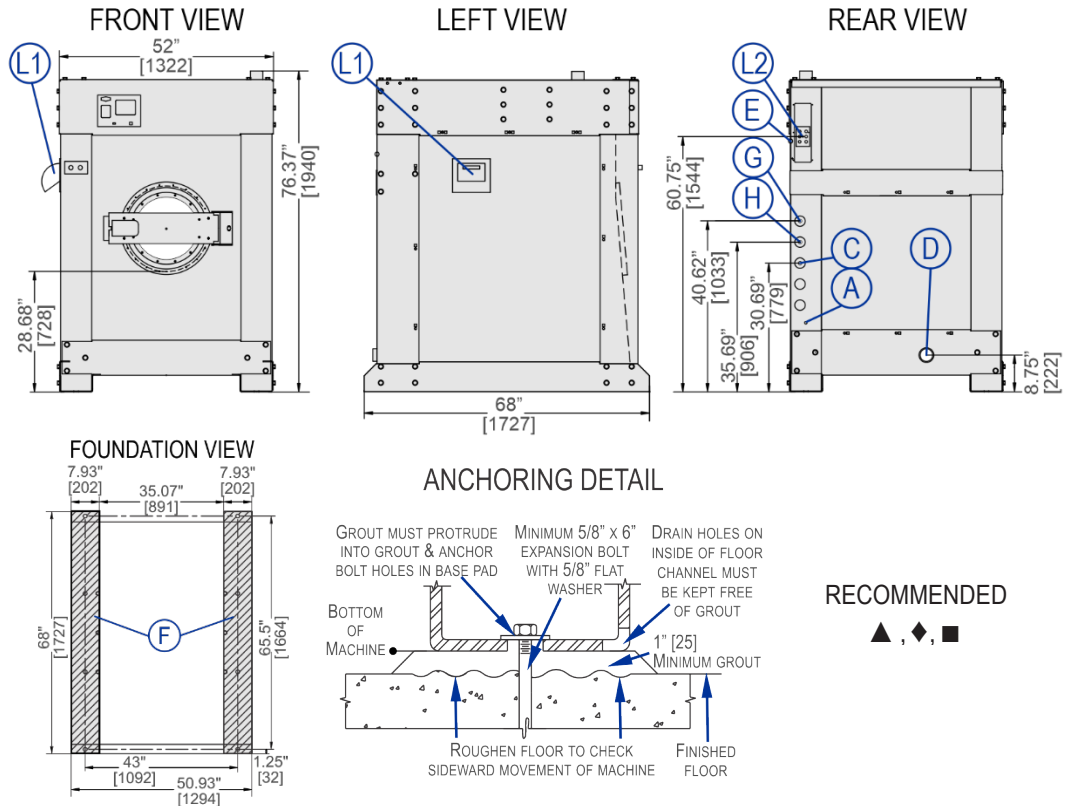
100 lb. (45 kg) Capacity Suspended Washer-Extractor Specification Sheet



milnor.com

LEGEND

A	Main air .25" (6mm) NPT
C	Cold water inlet, .75" (19 mm) NPT
D	Drain to rear 3" (76 mm) PSJ
E	Electrical connection
F	Anchor bolt holes 1.06" (27 mm)
G	Chemical flush 0.75" (19 mm) NPT
H	Hot water inlet, .75" (19 mm) NPT
L1	Soap chute
L2	Liquid supply inlets



MECHANICAL SPECIFICATIONS

Capacity – lb. (kg)	100 (45)
Cylinder Diameter x Depth – in. (mm)	36 x 26 (914 x 660)
Cylinder Volume – cu. ft. (L)	15.3 (433.7)
Door Opening – in. (mm)	20.37 (518)
Machine Dimensions (W x D x H) – in. (mm)	52 x 68 x 76.37 (1322 x 1727 x 1940)
Shipping Dimensions (W x D x H) – in. (mm)	59 x 71 x 81 (1500 x 1800 x 2060)
Motor – HP (kW)	10 (7.4)
Wash Speed – RPM	39-45
Distribution Speed – RPM	65
Extraction Speed – RPM	375-766
Extraction G-Force – for balanced loads	300
Static Weight – lb. (kg)◆	4505 (2043)
Max. Dynamic Load RMS – lb. (kg)◆	531 (241)
Frequency - Hz◆	12.78
Water Pressure ^(Required) – psi (bar)	10-75 (.68-5.1)
Water Valve - Cv Rating at 72°F (22°C)	5.8 (21.95)
Minimum Recommended Distance Between Machines – in. (mm)	12 (305)

ELECTRICAL SPECIFICATIONS

Voltage	Running Amps	Fuse (Amps)	Circuit Breaker (Amps)
208/3/60	24	FRN40	40
220/3/50-60	23	FRN40	40
240/3/60	21	FRN40	40
380/3/50-60	16	FRS25	25
480/3/60	13	FRS20	20

See Fuse and Wire Size manual MAEFUSE1BE for safety information. Contact factory regarding single phase availability.

▲ See dimensional drawing for complete details.

◆ It is the sole responsibility of the owner/user to assure that the floor and/ or any other supporting structure exceeds not only all applicable building codes, but also that the floor and/or any other supporting structure for each washer-extractor or group of washer-extractors has sufficient strength and rigidity (i.e., a natural or resonant frequency many times greater than the rotational machine speed with a reasonable factory of safety) to support the weight of all the fully loaded machine(s) including the weight of the water and goods, and including the published 360° rotating sinusoidal RMS forces that are transmitted by the machine(s). Contact the factory for additional machine data for use by a structural engineer.

■ Machine bases made from concrete should either be part of a monolithic pour or should be tied into foundation and not isolated from existing floor.