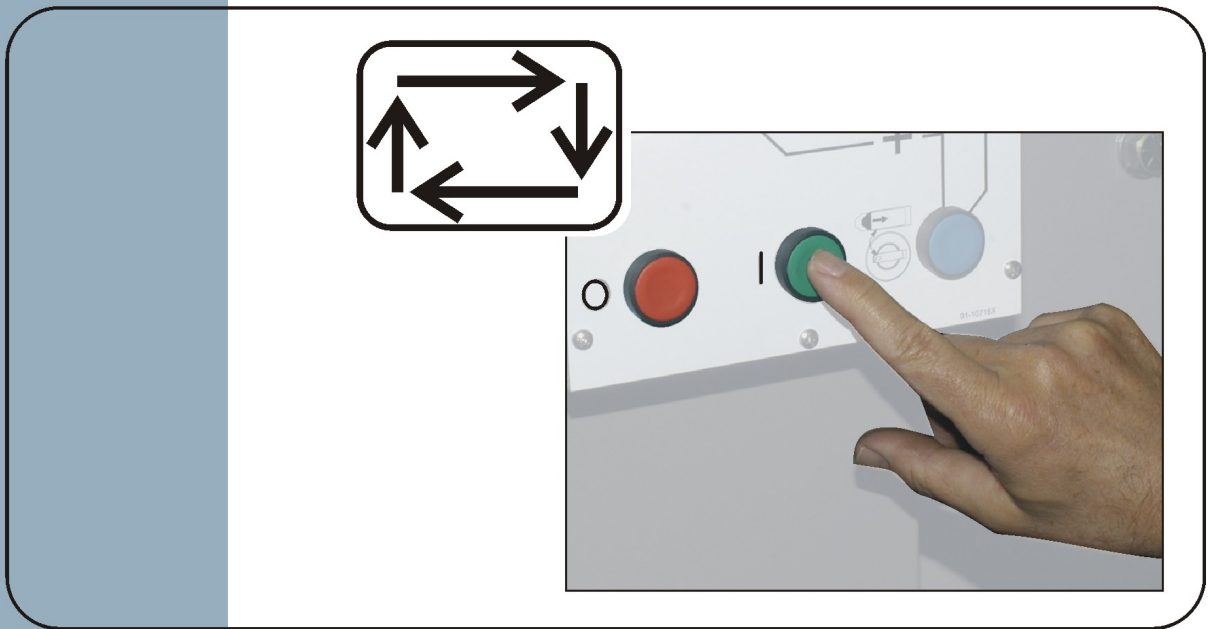


Published Manual Number/ECN: BICWDO01U1/2015043A

- Publishing System: TPAS2
- Access date: 01/20/2015
- Document ECNs: Latest



48040H7N, 68036H5N



BICWDO01U1/15043A

1
3

1. English

Special Information for Hydraulic WTB Washer-Extractors

BICWDO01EN/20141210

English

1

Special Information for Hydraulic WTB Washer-Extractors

1. Start-up Procedure

At power-up the display prompts the user to choose from either automatic mode or manual mode:

F1 = Automatic Mode—The machine waits for input from the Miltrac control system. The *Load Allowed* input (2MTA4-6) and *Discharge Allowed* input (2MTA4-5) must be grounded.

F2 = Manual Mode—The operator controls all operations through the keypad.

2. Special Configuration Decisions

To configure the machine, turn the keyswitch to the *Program* position. The *Configure* choice brings up a menu:

F1 = Machine Configuration—The display presents the configuration decisions used for both standard and WTB models.

F2 = WTB Features Configuration—The display presents decisions that apply to WTB models only.

F3 = Post-wash Configuration—The display presents decisions that control what data is passed from the washer-extractor to receiving devices.

2.1. WTB Features Configuration Decisions—This menu selection allows the configuration of features exclusive to machines with WTB (automatic loading) capabilities.

A. Clockwise Discharge Time (1/10 secs)—the duration of clockwise rotation while discharging. Units are 1/10 second. Valid range is 01 to 99.

B. Counter-clockwise Discharge Time—the duration of counter-clockwise rotation while discharging. Units are 1/10 second. Valid range is 01 to 99.

C. Discharge Dwell Time—the duration of the dwell between clockwise and counter-clockwise rotation during discharge. Units are 1/10 second. Valid range is 00 to 50.

D. Number of Discharge Sequences—the number of times to repeat the discharge sequence. Valid range is 02 to 20.

E. End Time Duration—Enter the time the machine will run in *End* mode before discharge is desired. Units are minutes. Valid range is 0 to 850.

F. Program Post-Dry?—Set to *1=Yes* if the controller should prompt for drycode and destination code information while a formula is being programmed. Set to *0=No* otherwise.

G. Elbow Delay Time—the desired time between when the loading process ends and the controller commands the elbow to tilt up. Units are seconds. Valid range is 000 to 255.

H. Elbow Flush Time—the desired time for the controller to flush the elbow during the loading process. Units are seconds. Valid range is 000 to 255.

I. Miltrac Address—the address this machine occupies on the Miltrac controller system. Valid range is 000 to 255.

J. Network String Length—the string length used to communicate with the Miltrac controller system.

2.2. Post-wash Data Pass Decisions—For each wash formula using post-wash codes, enter the wash formula number, the desired dryer program number, and the desired destination code. Press the *F10* button to save the changes and exit, or press the *Escape* button to abandon the changes and exit.

3. **Manual Override Position Machine Functions**

Use these steps to access the *Manual Load and Discharge* menu:

1. Enter the Manual Mode.
 - Press *F2* immediately after power-up, or
 - Press the *Manual* button from any automatic state (see the top line of the display).
2. Press *4* or scroll to select *4=Manual Load and Discharge*, then press the *Enter* key to confirm the selection.
3. The controller displays the menu items below:

F1 Door—Press *F1* to open or close the door. The door stops when you release the button.

F2 Tilt Rear—Press *F2* to tilt the rear of the machine up or down. Tilting stops when you release the button.

F3 Elbow—Press *F3* to raise or lower the elbow. The elbow stops when you release the button.

F4 Load—The machine must be in the load position: rear down, door open, elbow down. Begin the load sequence to open the cold water valve and turn the basket at drain speed. The water valve closes when the water level reaches the configured tilt level. **After the goods are completely inside the machine, you must end the load sequence** to stop basket rotation and close any open water valve. The sewer remains closed. Basket rotation continues until you press the *Done* button. Use manual controls to raise the elbow, close the door, and select a formula.

F5 Discharge—The machine must be in the discharge position: rear up, door open, elbow up and locked. Begin the discharge sequence to turn the basket in each direction for the configured discharge time. **After the goods are completely out of the machine, you must end the discharge sequence.** Basket rotation continues until you press the *Done* button. Return the machine to automatic mode or use the manual controls to operate the elbow, door, and tilting functions.

ESC Select Formula—Press the *Escape* key to select a formula to run.

4. **The Recovery Sequence**

The controller executes the recovery sequence described below when the machine is powered up and the operator enters *Automatic* mode, or if a transfer error is detected when the machine is receiving a load or discharging a load.

1. The machine achieves the "*Recovery*" position. In this position, the door is open, the elbow is up and locked, and the rear of the machine is down.
2. Answer the prompt when the machine controller asks, "Do I have a load?"
 - If the machine does not have a load, enter 0. The elbow will descend and the machine controller sets the Miltrac status to "*Want to Receive.*"
 - If the machine has a load, the controller prompts for whether the machine was loading or discharging when the transfer error occurred, then the machine controller prompts for batch data.

— End of BICWDO01 —