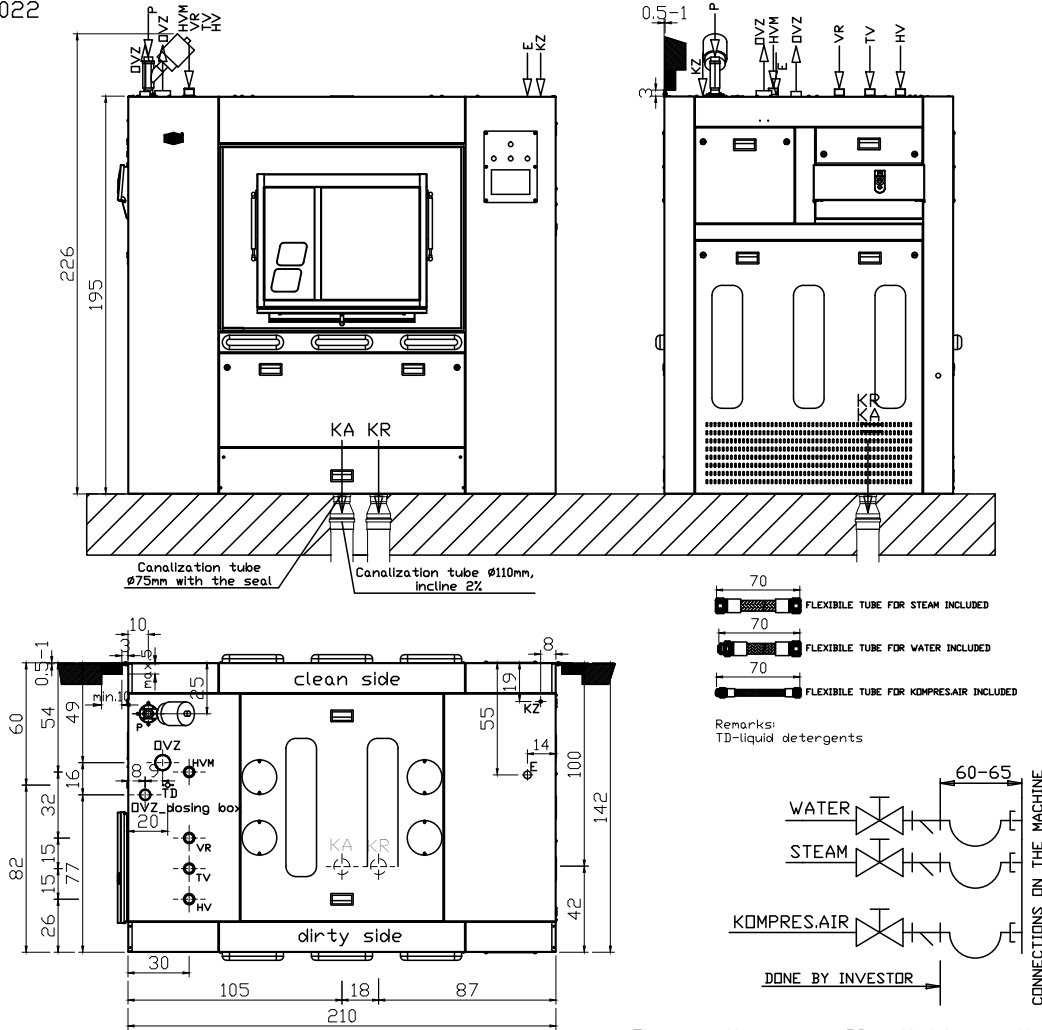


WASHING MACHINE MWB 90Z
Not fot UL, CSA
Dimensions sheme



2022



Dimensions in cm!
All rights for changes are reserved

El.connections over GS switch. Leave the length of el.cable longer than 2 m.

TEHN. CHARACTERISTICS	Type of the machine	Units	MWB 90Z (steam heating)	MWB 90Z (steam heating)	MWB 90Z (electric heating)	MWB 90Z (combined heating)
CAPACITY 1:10		kg/fill.	90			
DIMENSIONS		mm	2100 x 1420 x 1950 (2260)			
WEIGHT		kg	2410			
G-faktor			361			
CONNECTIONS:	cold water -HV warm water 75°C-TV cold water-soft -HVM 4th water inlet_option-VR steam (direct) -P kompresed air -KZ air exhaust -DVZ	DN (col)	32 (5/4)	40 (6/4)	---	Pv or Pn
DRAIN VALVE	-KA	mm	80			
CANALISATION TUBE	-KA	mm	75/110			
CANALIS.FOR RECYCLING (option)	-KR	mm	75/110			
EL.CONNECTION POWER		kW	11,8	(option 71,8)/86,8		
PROTECTION (400V/3NAC/50Hz)		A	40	(option 125)/160		
EL.CONNECTION CABLE -E		mm ² Cu	5x6	(option 5x35)/5x50		
PROTECTION (208V/3AC/50/60Hz)		A	50	250		
EL.CONNECTION CABLE -E		mm ² Cu	4x6	4x120		
PROTECTION (220V/3AC/50/60Hz)		A	50	250		
EL.CONNECTION CABLE -E		mm ² Cu	4x6	4x120		
PROTECTION (240V/3AC/50/60Hz)		A	50	224		
EL.CONNECTION CABLE -E		mm ² Cu	4x6	4x95		
PROTECTION (480V/3AC/50/60Hz)		A	40	125		
EL.CONNECTION CABLE -E		mm ² Cu	4x6	4x35		
PROTECTION (600V/3AC/50/60Hz)		A	25	100		
EL.CONNECTION CABLE -E		mm ² Cu	4x4	4x25		
CONNECT.HEAT.POWER:	steam	kW	200	---		
	electric	kW		(option-60)/75		
	kompresed air	l/s		0,2		
	water	l/s		2		
PRESSURE ON INLETS:	water		2 - 6			
	kompresed air	bar	6 - 10			
	high(Pv)/low(Pn) press.steam		3-8 (Pv)	0.3-0.5 (Pn)	---	Pv or Pn