

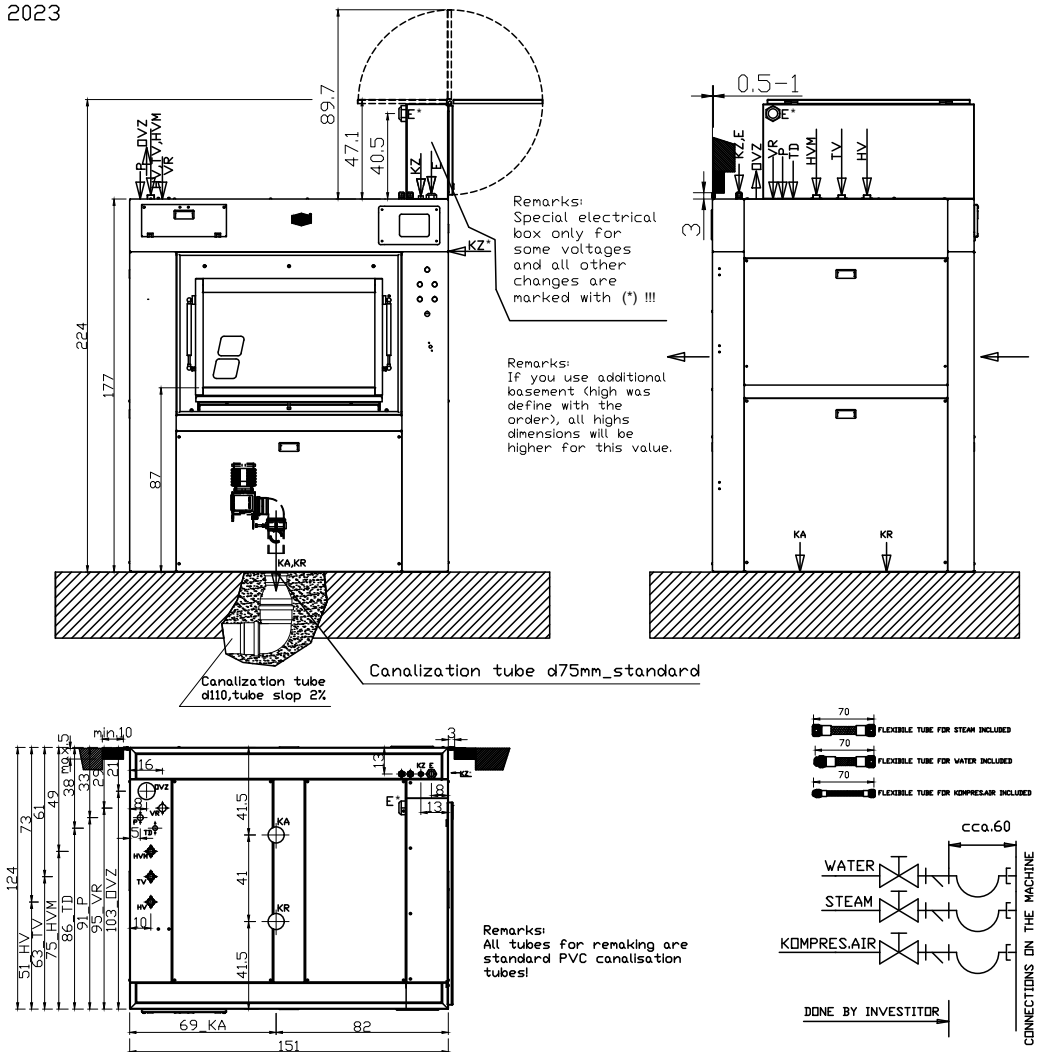
# WASHING MACHINE MWB 50Z

## Dimensions scheme

(For UL,CSA)



2023



Dimensions in cm!  
All rights for changes are reserved!

El.connections over GS switch. Leave the length of el.cable longer than 1,5m.

TEHN. CHARACTERISTICS	Type of the machine	Units	MWB 50Z	MWB 50Z	MWB 50Z	MWB 50Z		
			(steam heating)	(steam heating)	(electric heating)	(combined heating)		
CAPACITY 1:10		kg/fill.	50					
DIMENSIONS		mm	1510 x 1240 x 1770 (2240*)					
WEIGHT: net/gross		kg	1450					
G-faktor			371					
CONNECTIONS: cold water -HV hot water max.75°C -TV cold water-soft -HVM 4th water inlet_option-VR kompresed air-KZ and KZ* steam (direct) -P	DN	(col)	20 (3/4)		32 (5/4)	---	Pv or Pn	
			10 (3/8)					
			air exhaust -DVZ		75			
			liquid dosing -TD		15 (1/2)			
			CANALISATION -KA		75			
CANALIS.FOR RECYCLING(option)-KR		75						
EL.CONNECTION POWER		kW	8		53			
PROTECTION (400V/3NAC/50Hz)		A	40		100			
EL.CONNECTION CABLE -E*		mm <sup>2</sup> Cu	5x6		5x25			
PROTECTION (208V/3AC/50/60Hz)		A	50		160			
EL.CONNECTION CABLE -E*		mm <sup>2</sup> Cu	4x6		4x50			
PROTECTION (220V/3AC/50/60Hz)		A	50		160			
EL.CONNECTION CABLE -E		mm <sup>2</sup> Cu	4x6		4x16			
PROTECTION (240V/3AC/50/60Hz)		A	50		160			
EL.CONNECTION CABLE -E		mm <sup>2</sup> Cu	4x6		4x50			
PROTECTION (440/480V/3AC/50/60Hz)		A	40		80			
EL.CONNECTION CABLE -E		mm <sup>2</sup> Cu	4x6		4x16			
PROTECTION 600V/3AC/50/60Hz)		A	---		---			
EL.CONNECTION CABLE -E		mm <sup>2</sup> Cu	---		---			
CONNECT.HEAT.POWER:	steam	kW	100		---			
	electric	kW	---		45			
	water	l/s	2					
PRESSURE ON INLETS:	water	bar	2 - 6					
	kompresed air	bar	7 - 10					
	high(Pv)/low(Pn) press.steam	bar	3-8 (Pv)	0,3-0,5 (Pn)	---	Pv or Pn		