



RIGID MOUNT WASHER-EXTRACTORS WITH MILTOUCH™

TOUCHSCREEN CONTROL • UP TO 300 G'S • RINSAVE® WATER SAVER



42030 V6Z

TOUCHSCREEN CONTROL FOR EASE AND FLEXIBILITY IN WASHING

MILTOUCH™ TOUCHSCREEN CONTROL

Utilizing resistive touch screen technology and full VGA resolution, the MilTouch™ control has a clear and informative display which shows current machine status info including total formula time and time elapsed. With complete programming flexibility, MilTouch™ touchscreen control formulas can be developed on a PC, saved to USB external memory and uploaded with a screen touch. With intuitive fault diagnosis and relevant troubleshooting suggestions, the MilTouch™ control streamlines employee training and eliminates operator guesswork.



WHAT CAN YOU SEE WITH THE MILTOUCH™ CONTROL? A LOT OF INFORMATION ON ONE EASY-TO-READ SCREEN!



- A. Wash Program Number and Name
- B. Step Number indicates when the machine will finish
- C. Step Time Remaining and Total Step Time
- D. Step Name is programmed by the user
- E. Programmed Bath Temperature and Water Level
- F. Date and time are recorded in the productivity log files
- G. Wash Cycle Start time
- H. Bath temperature in a graphic format
- I. Manual control allows user to change water levels
- J. Pause button allows the user to halt the timer or properly end the formula
- K. Bath level indicator
- L. Progress bar shows current and total steps
- M. Formula Time Remaining and Total Formula Time
- N. Step Type displays which of the pre-defined steps is running
- O. Steam Valve and Cooldown Valve indicators
- P. Drain indicator
- Q. Water Valve indicators
- R. Chemical Valve indicators

To download the MilTouch PC programmer, visit
www.milnor.com/miltouchprogrammer

STANDARD FEATURES IMPROVE WASH QUALITY AND PROLONG LINEN LIFE

RINSAVE® WATER SAVER

Milnor's RinSave® water saver feature is standard on all V-Series washers. The exclusive software allows for the basket to reach a precise G-force that "slings" the wash liquor (including water, chemistry, and soil) out of the goods after a wash step. This feature will save up to 2 rinses per load and fill/rinse time. Laundries with the RinSave feature will get more loads per hour to save you money!



Scan to see cost savings

SUPERIOR CYLINDER DESIGN

Milnor's tall rib construction and precise cylinder speeds combine to provide excellent MAF – Mechanical Action Factor – delivering excellent wash quality and reducing time-consuming and costly rewashes.



36026 cylinder shown

SAFE CHEMICAL INJECTION

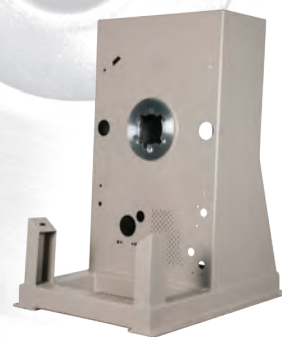
Chemicals are injected in the rear of the machine (unlike certain brands where chemicals are injected near the front of the machine at eyelevel). Chemicals are diluted and flushed into the sump of the washer-extractor so that raw chemical does not come in direct contact with the linen or the stainless steel.



30022 V8Z chemical inlet shown

CONTINUOUSLY WELDED FRAME

Milnor frames are designed to prevent concentration of stress in one spot and all structural components are tied together for optimum stress dispersion. This proven structural integrity means your machines will last longer.



30022 V8Z frame shown

EFFICIENT MOTOR

A NEMA Premium® efficient inverter-driven motor reaches maximum extraction speed more efficiently, reducing peak electricity amperage draw compared to average commercial motors.

NEMA Premium® is a registered trademark of Baldor Electric Company.



Milnor's V-Series washer-extractors with the MilTouch™ control are available in six capacities, ranging from 40–160 lb. (18–72 kg). The continuously welded frame, intelligent control, and standard RinSave® water saver, make these washer-extractors ideal for any commercial laundry.



SPECIFICATIONS

| | 30015 V8Z | 30022 V8Z | 36021 V5Z | 36021 V7Z | 36026 V5Z | 36026 V7Z | 42026 V6Z | 42030 V6Z |
|---------------------------------|--------------|--------------|--------------|--------------|--------------|--------------|--------------|--------------|
| Capacity*—lb. (kg) | 40 (18) | 60 (27) | 80 (36) | 80 (36) | 100 (45) | 100 (45) | 140 (63) | 160 (72) |
| Cylinder diameter—in. (mm) | 30 (762) | 30 (762) | 36 (914) | 36 (914) | 36 (914) | 36 (914) | 42 (1066) | 42 (1066) |
| Cylinder depth—in. (mm) | 15 (381) | 22 (559) | 21 (533) | 21 (533) | 26 (660) | 26 (660) | 26 (660) | 30 (762) |
| Cylinder volume—cu. Ft. (L) | 6.14 (174) | 9 (255) | 12.37 (350) | 12.37 (350) | 15.3 (433) | 15.3 (433) | 20.8 (590) | 24 (679) |
| Door opening—in. (mm) | 15.5 (394) | 15.5 (394) | 21.69 (551) | 21.69 (551) | 21.69 (551) | 21.69 (551) | 21.69 (551) | 21.69 (551) |
| Overall width—in. (mm) | 34.5 (876) | 34.5 (876) | 44.07 (1119) | 48.75 (1239) | 44.07 (1119) | 48.75 (1239) | 50.31 (1278) | 50.31 (1278) |
| Overall depth—in. (mm) | 48.62 (1234) | 55.76 (1416) | 55.15 (1401) | 70.31 (1786) | 60.14 (1528) | 75.31 (1913) | 77.71 (1974) | 84.56 (2148) |
| Overall height—in. (mm) | 57.31 (1456) | 57.56 (1462) | 67 (1702) | 69 (1753) | 67 (1702) | 69 (1753) | 69.63 (1768) | 69.63 (1768) |
| Motor—HP (kW) | 5 (3.72) | 5 (3.72) | 5 (3.72) | 10 (7.45) | 5 (3.72) | 10 (7.45) | 10 (7.45) | 15 (11.19) |
| Wash Speeds—RPM | 30-46 | 30-46 | 25-45 | 25-45 | 25-45 | 25-45 | 25-41 | 25-41 |
| Extract Speeds—RPM | 200-840 | 200-840 | 200-541 | 200-766 | 200-541 | 200-766 | 200-710 | 200-710 |
| Distribution Speed—RPM | 99 | 99 | 65 | 65 | 65 | 65 | 60 | 60 |
| Max Extract Speed—RPM | 840 | 840 | 541 | 766 | 541 | 766 | 710 | 710 |
| Extraction G-Force ⁺ | 300 | 300 | 150 | 300 | 150 | 300 | 300 | 300 |
| Inlet connection—in. (mm) | 0.75 (19) | 0.75 (19) | 0.75 (19) | 0.75 (19) | 0.75 (19) | 0.75 (19) | 1.25 (31) | 1.25 (31) |
| Drain valve—in. (mm) | 3 (76) | 3 (76) | 3 (76) | 3 (76) | 3 (76) | 3 (76) | 3 (76) | 3 (76) |
| Approx. gross weight—lb. (kg) | 1,090 (494) | 1,148 (521) | 1,455 (660) | 2,066 (937) | 1,500 (680) | 2,073 (940) | 2,054 (932) | 2,230 (1012) |

Specifications and appearance subject to change without notification. Contact the factory for acoustics data. *Depending on density and soil content of goods.
⁺For balanced loads; out of balance loads could result in lower extraction G-Force.

Printed in the U.S.A.
 © Pellerin Milnor Corporation
 Brochure B22SLI3001/23064



Pellerin Milnor Corporation
 P.O. Box 400, Kenner, LA, 70063-0400 USA
 Phone: 504.712.7656 • 800.469.8780
 Fax: 504.468.3094
 Email: milnorinfo@milnor.com
 www.milnor.com