



ON-BOARD MLF LINT FILTERS

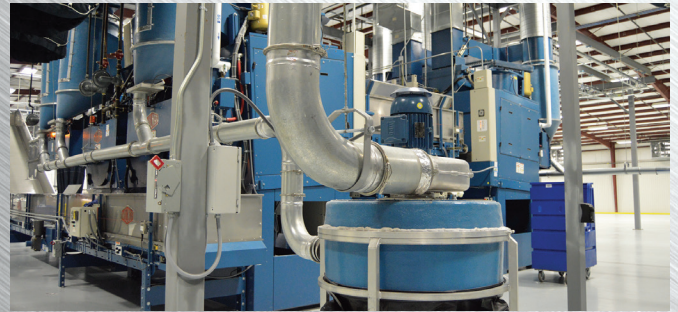
SIMPLICITY • RELIABILITY • SAFETY



MLF-1010

HOW IT WORKS

When the dryer completes its cycle the filter screen is automatically cleaned with compressed air. The lint falls into a storage bag or is vacuumed away from the lint filter. A fire suppression system is standard and will activate an alarm and put out the fire with water. A redundant fire suppression system requiring no electrical power will also extinguish a fire in the event of power failure.



EASY INSTALLATION

The On-Board Series MLF Lint Filters are attached directly to the blower of the dryers without requiring a transition. The Pre-Plumbed/Prewire option comes complete with pipe unions for easy pipe connections. The blowdown and fire suppression solenoids are pre-wired with a wire harness for connection directly to the dryers.

SIMPLIFIED LINT COLLECTION

The On-Board Series MLF Lint Filter eliminates the need to manually clean the dryer's lint filter. With this system, lint is stored in a collection bag for easy disposal. Also, an optional central vacuum can be installed allowing up to 6 filters to have the lint collected in 1 storage container, resulting in easier, more efficient disposal by collecting 98% of the lint produced.

FEATURES ON THE MLF ON-BOARD LINT FILTER

- Optimum inlet and discharge dimension tuned to the blower output from the dryers for superior airflow
- Manufactured in the USA with all Non-Corrosive components
- Variety of installation arrangements
- Outstanding field support
- Heavy duty stainless steel mesh screen for long life and superior filtration

EACH LINT FILTER IS SUPPLIED WITH THE FOLLOWING

- Class A Rated Fire Retardant Fiberglass Body (304 Stainless Steel body available as an option)
- 110 VAC Air and Water Solenoid Valves
- 2-Sprayheads
- 1-Fusible Link Sprayhead
- 1-60 gallon Air Receiver Tank per 2 Lint Filters
- 1-Compressed Air Gauge

SPECIFICATIONS	MLF-1004	MLF-1010	MLF-1015
Air Flow Capacity (cfm)	4,000	10,000	15,000
Overall Diameter-in. (mm)	25 (635)	47 (1193)	57.25 (1454)
Overall Height-in. (mm)	58 (1473)	73 (1854)	76.5 (1943)
Approximate net operating weight-lb. (kg)	110 (50)	170 (77)	210 (95)
Compressed air connection-in. (mm)	0.75 (19)	1 (25)	1 (25)
Fire Suppression water connection-in. (mm)	0.75 (19)	0.75 (19)	0.75 (19)
Operating voltage supplied by dryer (VAC)	110	110	110

Printed in the U.S.A.
 © Pellerin Milnor Corporation
 Brochure B22SLI3006/18215



Pellerin Milnor Corporation
 P.O. Box 400, Kenner, LA, 70063-0400 USA
 Phone: 504.712.7656 • 800.469.8780
 Fax: 504.468.3094
 Email: milnorinfo@milnor.com
 www.milnor.com