



MT140S PASS-THROUGH DRYER

FOR CBW®/PBW™ BATCH WASHERS AND OTHER WASHING SYSTEMS

Why they save time and energy

- Goods circulate freely—as they dry, they move to the upper end; cylinder enhances movement of hot air through the load.
- Huge open area—with about 65% of the perforated side sheet open, hot air flows easily through the basket.
- Unique Energy Saver Seal™ keeps air flowing through the goods without escaping around the outside of the basket.
- Fixed tilt—places the heaviest goods, which are wettest, nearest the heat entry.
- Fast unloading—no need to wait for mechanized tilting or operator attention, as the basket is always tilted toward the unload end.

SPECIFICATIONS

Capacity* – kg	91-145
Basket volume – L	3058
Filling Factor @ 1kg/25L	
kg	123
lb. per cu. ft.	2.5
Filling Factor @ 1kg/20L	
kg	152
lb. per cu. ft.	3.1
Basket diameter – mm	1626
Basket depth – mm	1473
Blower motor – kW	18.64
Basket drive motor – kW	2.23
Combustion air motor – kW	1.5
Approx. overall width – mm	2159
Approx. overall depth – mm	2626
Approx. overall height – mm	3763
Approx. net weight – kg	2431

*Capacity depends on type of goods – e.g., ranging from various fabrics/cotton goods to mats and wipers. Specifications and appearance are subject to change without notice. Contact factory for acoustics data.



The right size

These dryers can be used with washer-extractors or with CBW®/PBW™ tunnel washers.

Efficiency is long-term

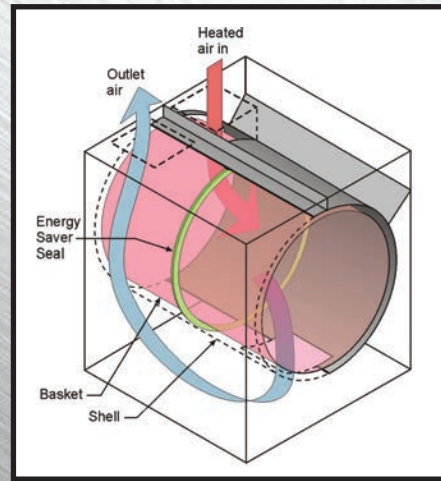
Most dryers are efficient when new. Milnor dryers stay that way. This is possible because the seal is placed circumferentially, not front-to-back as with competitive dryers. Milnor seals do not let air escape around the outside of the basket, wasting energy and time. Milnor dryers have proper insulation, which prevents heat loss and improves the work environment.

They boost productivity

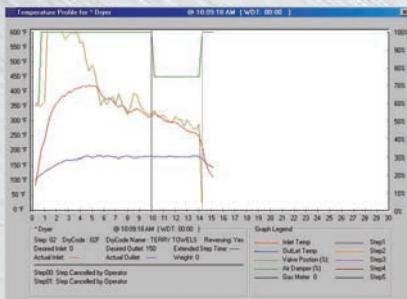
Fast cycles mean more output. Fast turnaround from one load to the next adds even more output. To minimize turnaround delays, Milnor conveyors and shuttles allow automated loading when the dryer is ready, without operator attention. Or, if you prefer, sling loading can be employed (the fixed tilt helps goods fall to the back). Gravity unloading is automatic, without an attendant, and there are no delays for hydraulic tilting. Pass-through design is ideal for streamlined workflow.

Quiet

Low noise levels (thanks to inverter-driven blower and smooth drive system) enhance working conditions.



Unique air path means a Milnor dryer gets the most efficient use of hot air. These design features are not found on other dryers.



Control provides efficiency, information

The microprocessor control allows field-programming of up to 200 drying formulas, to handle both full and partial loads for 100 different types of goods. Inlet and outlet temperatures may be programmed to optimize drying times. Modulating gas valve can maintain an inlet or outlet temperature within one percent of the set point (does not rely on a high-fire, low-fire scheme). Similar modulating temperature control is also available on steam models (optional extra). The control provides cooldown, self-diagnostics, plus such information as time in process, inlet and outlet temperatures, formula in progress, number of loads processed by dry code, and cumulative average drying time for each formula. Dryer controls can also be linked to a Midata® computer system for central programming, system monitoring and production reporting.

These dryers help streamline laundry production

Milnor dryers are pass-through machines that load at one end and discharge at the other. They form an integral part of an automated batch laundry processing system, along with a PulseFlow® batch washer or continuous batch washer, an extraction system, and transport conveyors.

These fully-automatic dryers can also be used to streamline operations with washer-extractor systems. Pass-through design allows excellent workflow, while automatic loading/unloading and drying controls reduce operator attention.



Automated lint removal systems

Milnor Lint Filter (MLF) Systems are available for all Milnor pass-through dryers. This MLF operates on differential back pressure. The lint filter can air-blast itself clean at a pre-set back pressure. The control cleans the screen only when needed—optimizing dryer performance. To find out more, request an Onboard MLF Lint Filter brochure.



MLF 1010 external lint filter has 1019 L surface area.

Printed in the U.S.A.
© Pellerin Milnor Corporation
Brochure B22SLI5004/I5346



Pellerin Milnor Corporation
P.O. Box 400, Kenner, LA, 70063-0400 USA
Phone: 504.712.7656 • 800.469.8780
Fax: 504.468.3094
Email: milnorinfo@milnor.com
www.milnor.com