



400G RIGID-MOUNT WASHER-EXTRACTORS

PROGRAMMING FLEXIBILITY • TWO CAPACITIES • RINSAVE® WATER SAVER



30022 VZZ

MILTOUCH™ TOUCHSCREEN CONTROL



Utilizing resistive touch screen technology and full VGA resolution, the MilTouch™ control has a clear and informative display which shows current machine status info including total formula time and time elapsed. With complete programming flexibility,

MilTouch™ touchscreen control formulas can be developed on a PC, saved to USB external memory and uploaded with a screen touch. With intuitive fault diagnosis and relevant troubleshooting suggestions, the MilTouch™ control streamlines employee training and eliminates operator guesswork.



SUPERIOR CYLINDER DESIGN

Milnor's superior cylinder design and tall, lifting ribs yield greater wash/rinse quality.

RINSAVE® WATER SAVER FEATURE



The innovative RinSave® Water Saver feature allows a precise G-force to "sling" the wash liquor (including water, chemistry, and soil) out of the goods after a wash step – saving up to 2 rinses per load and fill/rinse time.

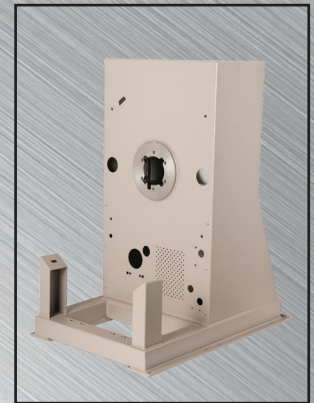


Scan to read more about this time, water, and energy saving feature—only available from Milnor!

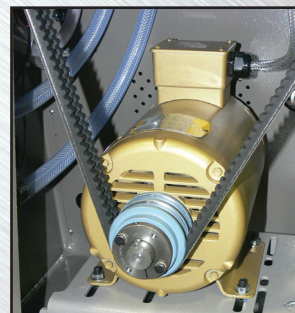
DEPENDABILITY IN DESIGN



Narrow Footprint: Fits through a 3'-0" doorway



Continuously welded frame for structural integrity



NEMA Premium® efficient inverter-driven motor



Safe chemical injection

SPECIFICATIONS	30015 VZZ	30022 VZZ
Capacity*-lb. (kg)	40 (18)	60 (27)
Cylinder diameter-in. (mm)	30 (762)	30 (762)
Cylinder depth-in. (mm)	15 (381)	22 (559)
Door Opening-in. (mm)	15.5 (394)	15.5 (394)
Cylinder volume-cu. Ft. (L)	6.14 (174)	9 (255)
Overall width-in. (mm)	34.5 (876)	34.5 (876)
Overall depth-in. (mm)	48.62 (1234)	55.56 (1412)
Overall height-in. (mm)	57.32 (1455)	57.69 (1466)
Motor-HP (kW)	5 (3.72)	6 (4.47)
Wash Speeds-RPM	30-46	30-46
Distribution Speed-RPM	65	65
Max Extract Speed-RPM	970	970
Extraction G-Force+	400	400
Inlet connection-in. (mm)	0.75 (19)	0.75 (19)
Drain valve-in. (mm)	3 (76)	3 (76)
Approx gross weight-lb. (kg)	1,090 (494)	1,148 (521)

Specifications and appearance subject to change without notification. Contact the factory for acoustics data. *Depending on density and soil content of goods. +For balanced loads; out of balance loads could result in lower extraction G-Force.

