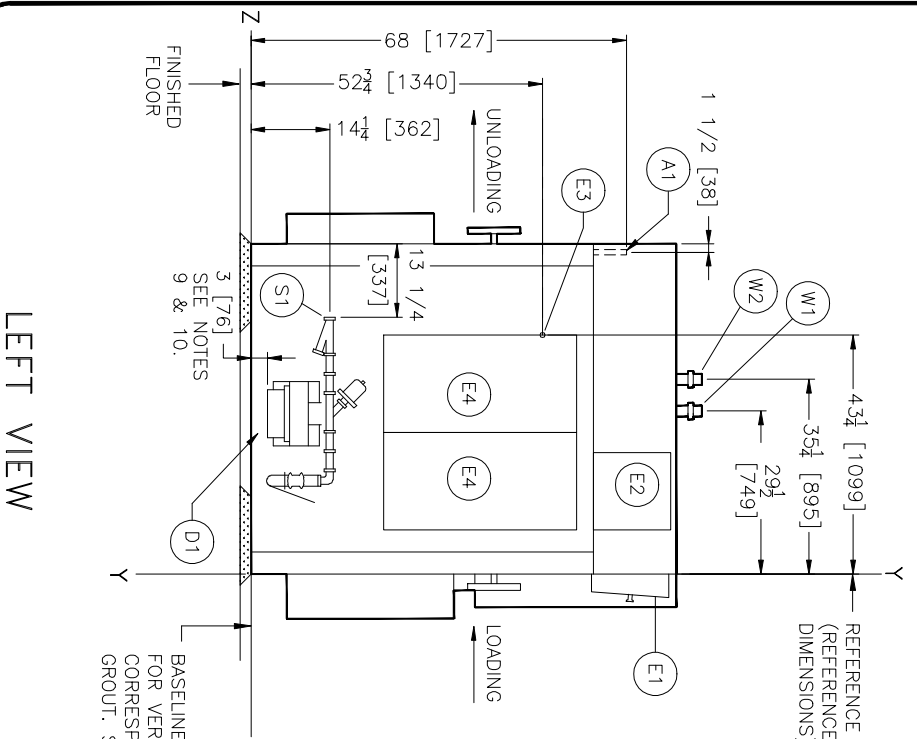


FOUNDATION PLAN VIEW

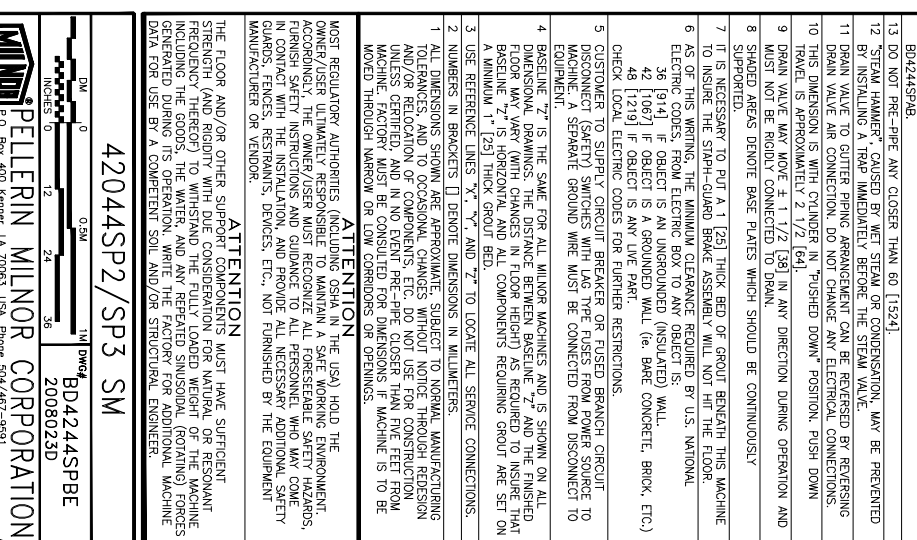
REAR (UNLOAD END) VIEW



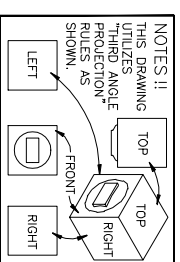
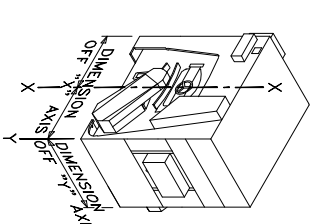
LEFT VIEW

FRONT (LOAD END) VIEW

RIGHT VIEW



RIGHT VIEW



ITEM	DESCRIPTION
W4	INDEPENDANT COOLDOWN CONNECTION, 3/4" NPT.
W3	HOT WATER FOR FLUSHING PERISTALTIC, 1/2" NPT.
W2	COLD WATER INLET CONNECTION, 1 1/2" NPT.
W1	HOT WATER INLET CONNECTION, 1 1/2" NPT.
S1	SOAP CHUTE
P2	PERISTALTIC SUPPLY CONNECTION
P1	SINGLE MOTOR DRIVE
F3	GROUT HOLES, 3" DIAMETER, 1 PER PAD.
F2	(8) 1-1/16" DIAMETER ANCHOR BOLTS HOLES, ANCHOR
F1	(1) BOLT PER PAD MINIMUM, 5/8" X 6" BOLTS MINIMUM.
E4	ELECTRICAL CONTROL BOX
E3	ELECTRICAL CONNECTION
E2	MICROPROCESSOR CONTROL BOX
E1	MICROPROCESSOR CONTROL PANEL
D1	DRAIN VALVE, 8" DIAMETER, SHOWN IN PUSHED DOWN POSITION. ALSO, SEE NOTES 9 & 10.
A2	STARHARTRON
A1	COMPRESSED AIR INLET CONNECTION, 1/4" NPT.

NOTES

- SHOW TO LABEL THE MACHINE AND ALLOW FOR 1" MINIMUM GROUT ANCHOR WITH ONE ANCHOR BOLT PER PAD. MINIMUM USE 5/8" X 6" BOLTS. MINIMUM SEE INSTALLATION MAINTENANCE MANUAL FOR FURTHER INSTRUCTIONS.
- ITEMS SHOWN ON THIS PAGE ARE STANDARD OF THIS MACHINE. FOR OPTIONS SEE BD2445P2AB.
- DO NOT PRE-PIPE ANY CLOSER THAN 60 [1524]
- STEAM HAMMER CAUSED BY WET STEAM OR CONDENSATION MAY BE PREVENTED BY INSTALLING A TRAP IMMEDIATELY BEFORE THE STEAM VALVE.
- DRAIN VALVE TO GUTTER PIPING ARRANGEMENT CAN BE REVERSED BY REVERSING DRAIN VALVE AIR CONNECTION. DO NOT CHANGE ANY ELECTRICAL CONNECTIONS.
- THIS DIMENSION IS WITH CYLINDER IN "PUSHED DOWN" POSITION. PUSH DOWN TRAVEL IS APPROXIMATELY 2 1/2 [64].
- DRAIN VALVE MAY MOVE ± 1 1/2 [38] IN ANY DIRECTION DURING OPERATION AND MUST NOT BE ROUTE CONNECTED TO DRAIN.
- SPREAD REARS DENOTE BASE PLATES WHICH SHOULD BE CONTINUOUSLY SPRUNG NECESSARY TO PUT A 1 [25] THICK BED OF GROUT BENEATH THE MACHINE TO INSURE THE STARHARTRON BRAKE ASSEMBLY WILL NOT HIT THE FLOOR.
- AS OF THIS WRITING, THE MINIMUM CLEARANCE REQUIRED BY U.S. NATIONAL ELECTRIC CODES, FROM ELECTRIC BOX TO ANY OBJECT IS:
 - 36 [914] IF OBJECT IS AN UNGROUNDED (INSULATED) WALL.
 - 42 [1067] IF OBJECT IS A GROUNDED WALL (i.e. BARE CONCRETE, BRICK, ETC.)
 - 48 [1219] IF OBJECT IS ANY LIVE PART.
- CHECK LOCAL ELECTRIC CODES FOR FURTHER RESTRICTIONS.
- CUSTOMER TO SUPPLY CIRCUIT BREAKER OR FUSED BRANCH CIRCUIT WITH ONE INLET SEPARATE GROUND WIRE MUST BE CONNECTED FROM DISCONNECT TO EQUIPMENT.
- BASELINE "Z" IS THE SAME FOR ALL WILCOR MACHINES AND IS SHOWN ON ALL DIMENSIONAL DRAWINGS. THE DISTANCE BETWEEN BASELINE "Z" AND THE FINISHED FLOOR MAY VARY (WITH CHANGES IN FLOOR HEIGHT) AS REQUIRED TO INSURE THAT A MINIMUM 1" IS PROVIDED TO THE BOTTOM OF COMPONENTS REQUIRING GROUT SET ON EQUIPMENT.
- USE REFERENCE LINES "X", "Y", AND "Z" TO LOCATE ALL SERVICE CONNECTIONS.
- NUMBERS IN BRACKETS [] DENOTE DIMENSIONS IN MILLIMETERS.
- PERMISSIONS TO REPRODUCE THIS DRAWING ARE GRANTED BY MANUFACTURING TOLERANCES AND TO OCCASIONAL CHANGES WITHOUT NOTICE THROUGH DESIGN AND/OR RELOCATION OF COMPONENTS, ETC. DO NOT USE FOR CONSTRUCTION UNLESS CERTIFIED, AND IN NO EVENT PRE-PIPE CLOSER THAN FIVE FEET FROM MACHINE. FACTORY MUST BE CONSULTED FOR DIMENSIONS IF MACHINE IS TO BE MOVED THROUGH NARROW OR LOW CORRIDORS OR OPENINGS.

ATTENTION

THE FLOOR AND/OR OTHER SUPPORT COMPONENTS MUST HAVE SUFFICIENT STRENGTH (AND RIGIDITY WITH DUE CONSIDERATION FOR NATURAL OR RESONANT FREQUENCY THEREOF) TO WITHSTAND THE FULLY LOADED WEIGHT OF THE MACHINE INCLUDING THE GOODS, THE WATER, AND ANY REVERSED (ROTATING) FORCES DURING OPERATION. THE USER MUST BE ADVISED THAT THE MACHINE IS TO BE MOVED THROUGH NARROW OR LOW CORRIDORS OR OPENINGS.

MOST REGULATORY AUTHORITIES (LOCAL, STATE, FEDERAL) REQUIRE THE OWNER/USER TO BE ULTIMATELY RESPONSIBLE TO OBTAIN A SAFE WORKING ENVIRONMENT. ACCORDINGLY, THE OWNER/USER MUST RECOGNIZE ALL FORESEEABLE SAFETY HAZARDS, FURNISH SAFETY INSTRUCTIONS AND GUIDANCE TO ALL PERSONNEL WHO MAY COME IN CONTACT WITH THE INSTALLATION, AND PROVIDE ALL NECESSARY ADDITIONAL SAFETY WARNINGS, PRECISE, KNOWN, DEVICES, ETC., NOT FURNISHED BY THE EQUIPMENT MANUFACTURER OR VENDOR.

42044SP2/SP3 SM

BD4244SPBE
2008023D

PELLERIN MILNOR CORPORATION
510 Bellwood Drive, Lake Charles, LA 70603, USA
Phone 504/489-9931
Fax 504/489-1849, Email: info@milnor.com